

Datasheet for ABIN527586
anti-KIF16B antibody (AA 1-1317)



[Go to Product page](#)

1 Image

Overview

Quantity:	50 µg
Target:	KIF16B
Binding Specificity:	AA 1-1317
Reactivity:	Human
Host:	Mouse
Clonality:	Polyclonal
Conjugate:	This KIF16B antibody is un-conjugated
Application:	Western Blotting (WB)

Product Details

Purpose:	Mouse polyclonal antibody raised against a full-length human C20orf23 protein.
Immunogen:	C20orf23 (NP_078980, 1 a.a. ~ 1317 a.a) full-length human protein.
Sequence:	MASVKVAVRV RPMNRREKDL EAKFIIQMEK SKTTITNLKI PEGGTGDSGR ERTKTFTYDF SFYSADTKSP DYVSQEMVFK TLGTDVVKSA FEGYNACVFA YGQTGSGKSY TMMGNSGDSG LIPRICEGLF SRINETTRWD EASFRTEVS Y LEIYNERNVRD LLRRKSSKTF NLRVREHPKE GPYVEDLSKH LVQNYGDVEE LMDAGNINRT TAATGMNDVS SRSHAFTIK FTQAKFDSEM PCETVSKIHL VDLASERAD ATGATGVRLK EGGNINKSLV TLGNVISALA DLSQDAANTL AKKKQVFVPY RDSVLTWLLK DSLGGNSKTI MIATISPADV NYGETLSTLR YANRAKNIIN KPTINEDANV KLIRELRAEI ARLKTLAAG NQIALLDSP ALSMEEKLQQ NEARVQELTK EWTNKWNETQ NILKEQTLAL RKEGIGVVD SELPHLIGID DLLSTGIIL YHLKEGQTYV GRDDASTEQD IVLHGLDLES EHCIFENIGG TVTLIPLSGS QCSVNGVQIV EATHLNQGAV ILLGRTNMFR FNHPKEAAKL REKRKSGLLS SFSLSM TDLS KSRENLSAVM LYNPGLEFER

Product Details

QQREELEKLE SKRKLIEEME EKQKSDKAEL ERMQQEVETQ RKETEIVQLQ IRKQEEESLKR
RSFHIEENKLLK DLLAEKEKFE EERLREQQEI ELQKKRQEEE TFLRVQEELQ RLKELNNNEK
AEKFQIFQEL DQLQKEKDEQ YAKLELEKKR LEEQEKEQVM LVAHLEEQLR EKQEMIQLLR
RGEVQWVEEE KRDLEGIRES LLRVKEARAG GDEDGEELEK AQLRFFEFKR RQLVKLVNLE
KDLVQQKDIL KKEVQEEQEI LECLKCEHDK ESRLLEKHDE SVTDVTEVPQ DFEKIKPVEY
RLQYKERQLQ YLLQNHLPPL LEEKQRAFEI LDRGPLSLDN TLYQVEKEME EKEEQLAQYQ
ANANQLQKLQ ATFEFTANIA RQEEKVRKKE KEILESREKQ QREALERALA RLERRHSALQ
RHSTLGMEIE EQRQKLASLN SGSREQSGLQ ASLEAEQEAL EKDQERLEYE IQQLKQKIYE
VDGVQKDHGG TLEGKVASSS LPVSAEKSHL VPLMDARINA YIEEEVQRRR QDLHRVISEG
CSTSADTMKD NEKLHNGTIQ RKLKYERMVS RSLGANPDDL KDPIKISIPR YVLCGQGKDA
HFEFEVKITV LDETWTVFRR YSRFREMHTK LKLKYAELAA LEFPPKKLFG NKDERVIAER
RSHLEKYLRD FFSVMLQSAT SPLHINKVGL TLSKHTICEF SPFFKKGVFD YSSHGTG

Cross-Reactivity: Human

Characteristics: Antibody reactive against mammalian transfected lysate.

Target Details

Target: KIF16B

Alternative Name: KIF16B ([KIF16B Products](#))

Background: Full Gene Name: kinesin family member 16B
Synonyms: C20orf23,KISC20ORF,SNX23

Gene ID: 55614

NCBI Accession: [NM_024704](#)

Pathways: [EGFR Signaling Pathway](#)

Application Details

Application Notes: Optimal working dilution should be determined by the investigator.

Restrictions: For Research Use only

Handling

Buffer: In 1x PBS, pH 7.4

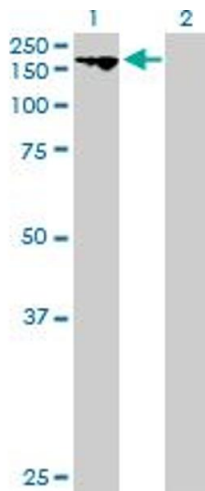
Handling Advice: Aliquot to avoid repeated freezing and thawing.

Handling

Storage: -20 °C

Storage Comment: Store at -20°C or lower. Aliquot to avoid repeated freezing and thawing.

Images



Western Blotting

Image 1. Western Blot analysis of KIF16B expression in transfected 293T cell line by KIF16B MaxPab polyclonal antibody.

Lane 1: C20orf23 transfected lysate(144.87 KDa).

Lane 2: Non-transfected lysate.