

Datasheet for ABIN527587
anti-KIF16B antibody (AA 65-174)



[Go to Product page](#)

2 Images

Overview

| | |
|----------------------|---------------------------------------|
| Quantity: | 100 µg |
| Target: | KIF16B |
| Binding Specificity: | AA 65-174 |
| Reactivity: | Human |
| Host: | Mouse |
| Clonality: | Monoclonal |
| Conjugate: | This KIF16B antibody is un-conjugated |
| Application: | Western Blotting (WB), ELISA |

Product Details

| | |
|-------------------|---|
| Purpose: | Mouse monoclonal antibody raised against a partial recombinant KIF16B. |
| Immunogen: | KIF16B (AAH34984, 65 a.a. ~ 174 a.a) partial recombinant protein with GST tag. MW of the GST tag alone is 26 KDa. |
| Sequence: | DDLKDPIKIS IPRYVLCGQG KDAHFEFEVK LAALEFPPKK LFGNKDERVI AERRSHLEKY LRDFFSVMLQ SATSPLHINK VGLTLSKHTI CEFSPFFKKG VFDYSSHGTG |
| Clone: | 2B5 |
| Isotype: | IgG2a |
| Cross-Reactivity: | Human |
| Characteristics: | Antibody Reactive Against Recombinant Protein. |

Target Details

| | |
|-------------------|---|
| Target: | KIF16B |
| Alternative Name: | KIF16B (KIF16B Products) |
| Background: | Full Gene Name: kinesin family member 16B Synonyms: C20orf23,KISC20ORF,SNX23 |
| Gene ID: | 55614 |
| Pathways: | EGFR Signaling Pathway |

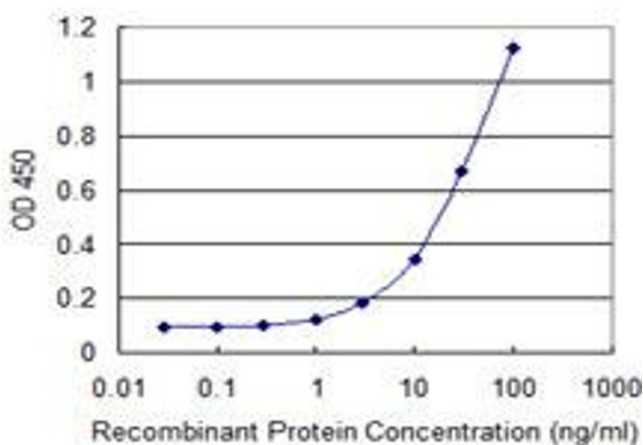
Application Details

| | |
|--------------------|--|
| Application Notes: | Optimal working dilution should be determined by the investigator. |
| Restrictions: | For Research Use only |

Handling

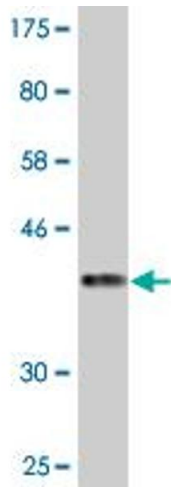
| | |
|------------------|--|
| Buffer: | In 1x PBS, pH 7.4 |
| Handling Advice: | Aliquot to avoid repeated freezing and thawing. |
| Storage: | -20 °C |
| Storage Comment: | Store at -20°C or lower. Aliquot to avoid repeated freezing and thawing. |

Images



ELISA

Image 1. Detection limit for recombinant GST tagged KIF16B is 0.3 ng/ml as a capture antibody.



Western Blotting

Image 2. Western Blot detection against Immunogen (37.84 KDa).