



[Go to Product page](#)

Datasheet for ABIN527614
anti-NPLOC4 antibody (AA 1-608)

3 Images

Overview

Quantity:	50 µg
Target:	NPLOC4
Binding Specificity:	AA 1-608
Reactivity:	Human
Host:	Mouse
Clonality:	Polyclonal
Conjugate:	This NPLOC4 antibody is un-conjugated
Application:	Western Blotting (WB), Immunofluorescence (IF)

Product Details

Purpose:	Mouse polyclonal antibody raised against a full-length human NPLOC4 protein.
Immunogen:	NPLOC4 (AAH25930.1, 1 a.a. ~ 608 a.a) full-length human protein.
Sequence:	MAESIIIRVQ SPDGVKRITA TKRETAATFL KKVAKKEFGFQ NNGFSVYINR NKTGEITASS NKSLNLLKIK HGDLLFLFPS SLAGPSSEME TSVPPGFKVF GAPNVVEDEI DQYLSKQDGK IYRSRDPQLC RHGPLGKCVH CVPLEPFDED YLNHLEPPVK HMSFHAYIRK LTGGADKGGK VALENISCKI KSGCEGHLPW PNGICTKCQP SAITLNRQKY RHVDNIMFEN HTVADRFLDF WRKTGNQHFG YLYGRYTEHK DIPLGIRAEV AAIYEPQIG TQNSLELLED PKAEVVDEIA AKLGLRKVGW IFTDLVSED T RKGTVRYSRN KDTYFLSSEE CITAGDFQNK HPNMCRLSPD GHFGSKFVTA VATGGPDNQV HFEGYQVSNQ CMALVRDECL LPCKDAPELG YAKESSEQY VPDVFYKDVD KFGNEITQLA RPLPVEYLII DITTTFPKDP VYTFSISQNP FPIENRDVLG ETQDFHSLAT YLSQNTSSVF LDTISDFHLL LFLVTNEVMP LQDSISLLE AVRTRNEELA QTWKRSEQWA TIEQLCSTVG GQLPGLHEYG AVGGSTHTAT AAMWACQHCT FMNQPGTGHC

Product Details

EMCSLPRT

Cross-Reactivity: Human

Characteristics: Antibody reactive against mammalian transfected lysate.

Target Details

Target: NPLOC4

Alternative Name: NPLOC4 ([NPLOC4 Products](#))

Background: Full Gene Name: nuclear protein localization 4 homolog (*S. cerevisiae*)
Synonyms: FLJ20657,FLJ23742,KIAA1499,NPL4

Gene ID: 55666

Application Details

Application Notes: Optimal working dilution should be determined by the investigator.

Restrictions: For Research Use only

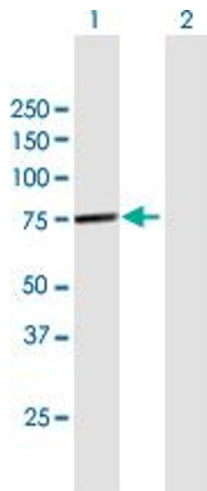
Handling

Buffer: In 1x PBS, pH 7.4

Handling Advice: Aliquot to avoid repeated freezing and thawing.

Storage: -20 °C

Storage Comment: Store at -20°C or lower. Aliquot to avoid repeated freezing and thawing.

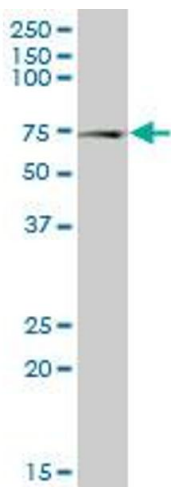


Western Blotting

Image 1. Western Blot analysis of NPLOC4 expression in transfected 293T cell line by NPLOC4 MaxPab polyclonal antibody.

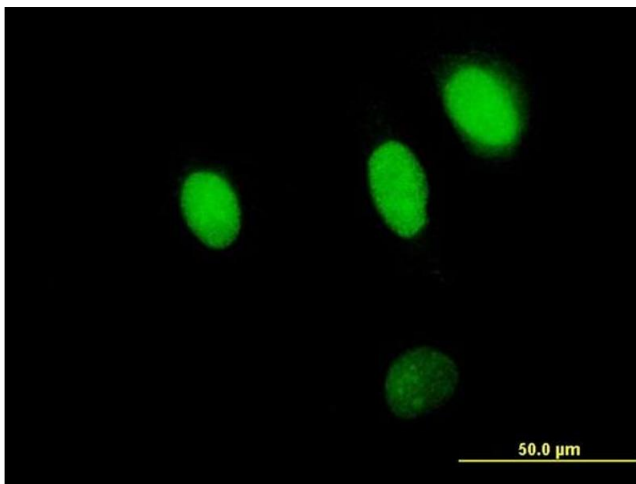
Lane 1: NPLOC4 transfected lysate(66.88 KDa).

Lane 2: Non-transfected lysate.



Western Blotting

Image 2. NPLOC4 MaxPab polyclonal antibody. Western Blot analysis of NPLOC4 expression in human spleen.



Immunofluorescence

Image 3. Immunofluorescence of purified MaxPab antibody to NPLOC4 on HeLa cell. [antibody concentration 10 ug/ml]