



[Go to Product page](#)

Datasheet for ABIN527635  
**anti-ENAH antibody (AA 291-390)**

3 Images

Overview

Quantity:	100 µg
Target:	ENAH
Binding Specificity:	AA 291-390
Reactivity:	Human
Host:	Mouse
Clonality:	Monoclonal
Conjugate:	This ENAH antibody is un-conjugated
Application:	Western Blotting (WB), ELISA

Product Details

Purpose:	Mouse monoclonal antibody raised against a partial recombinant ENAH.
Immunogen:	ENAH (NP_001008493.1, 291 a.a. ~ 390 a.a) partial recombinant protein with GST tag. MW of the GST tag alone is 26 KDa.
Sequence:	LQAASQPAET PSQQGIVLGP LAPPPPPPLP PGPAQASVAL PPPPGPPPPP PLPSTGPPPPP PPPPPLPNQV PPPPPPPPPAP PLPASGFFLA SMSEDNRPLT
Clone:	3E6
Isotype:	IgG2a
Cross-Reactivity:	Human
Characteristics:	Antibody Reactive Against Recombinant Protein.

## Target Details

Target:	ENAH
Alternative Name:	ENAH ( <a href="#">ENAH Products</a> )
Background:	Full Gene Name: enabled homolog (Drosophila) Synonyms: ENA,MENA,NDPP1
Gene ID:	55740
NCBI Accession:	<a href="#">NM_001008493</a>

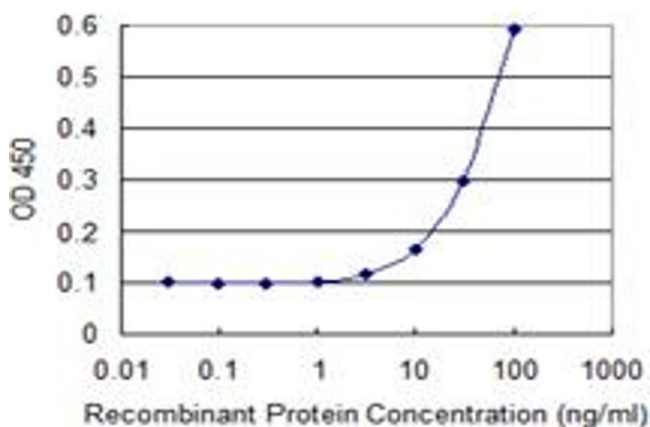
## Application Details

Application Notes:	Optimal working dilution should be determined by the investigator.
Restrictions:	For Research Use only

## Handling

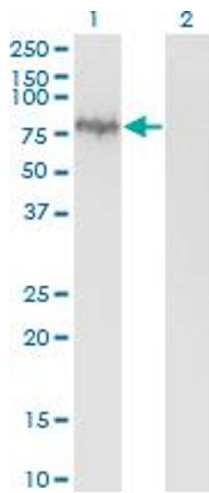
Buffer:	In 1x PBS, pH 7.4
Handling Advice:	Aliquot to avoid repeated freezing and thawing.
Storage:	-20 °C
Storage Comment:	Store at -20°C or lower. Aliquot to avoid repeated freezing and thawing.

## Images



### ELISA

**Image 1.** Detection limit for recombinant GST tagged ENAH is 3 ng/ml as a capture antibody.

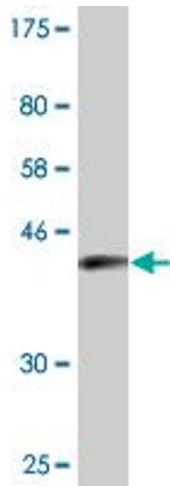


### Western Blotting

**Image 2.** Western Blot analysis of ENAH expression in transfected 293T cell line by ENAH monoclonal antibody (M01), clone 3E6.

Lane 1: ENAH transfected lysate (Predicted MW: 66.5 KDa).

Lane 2: Non-transfected lysate.



### Western Blotting

**Image 3.** Western Blot detection against Immunogen (36.74 KDa).