



[Go to Product page](#)

Datasheet for ABIN527639
anti-CHFR antibody (AA 136-194)

3 Images

Overview

Quantity:	100 µg
Target:	CHFR
Binding Specificity:	AA 136-194
Reactivity:	Human
Host:	Mouse
Clonality:	Monoclonal
Conjugate:	This CHFR antibody is un-conjugated
Application:	ELISA, Western Blotting (WB)

Product Details

Purpose:	Mouse monoclonal antibody raised against a partial recombinant CHFR.
Immunogen:	CHFR (AAH12072.1, 136 a.a. ~ 194 a.a) partial recombinant protein with GST tag. MW of the GST tag alone is 26 KDa.
Sequence:	TSGAGAGRGA DPRVPPSSPA TQVCFEEPQP STSTSDLFPT ASASSTEPSP AGRERSSSC
Clone:	2B11
Isotype:	IgG2a
Cross-Reactivity:	Human
Characteristics:	Antibody Reactive Against Recombinant Protein.

Target Details

Target:	CHFR
Alternative Name:	CHFR (CHFR Products)
Background:	Full Gene Name: checkpoint with forkhead and ring finger domains Synonyms: FLJ10796,FLJ33629,RNF116,RNF196
Gene ID:	55743

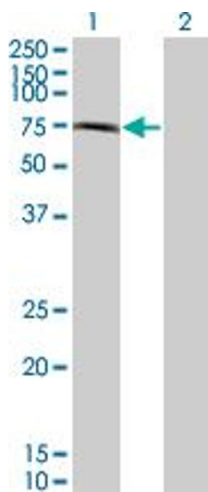
Application Details

Application Notes:	Optimal working dilution should be determined by the investigator.
Restrictions:	For Research Use only

Handling

Buffer:	In 1x PBS, pH 7.4
Handling Advice:	Aliquot to avoid repeated freezing and thawing.
Storage:	-20 °C
Storage Comment:	Store at -20°C or lower. Aliquot to avoid repeated freezing and thawing.

Images

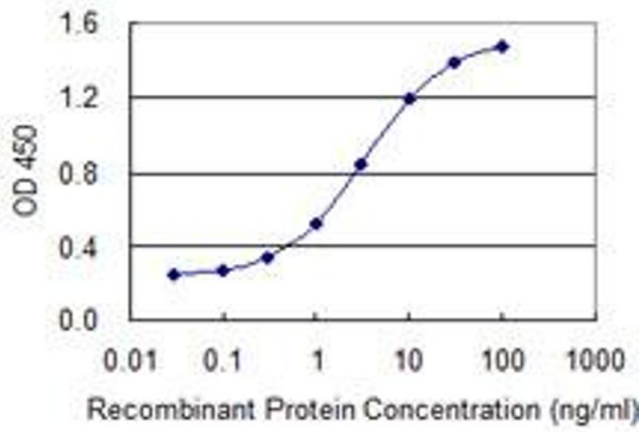


Western Blotting

Image 1. Western Blot analysis of CHFR expression in transfected 293T cell line by CHFR monoclonal antibody (M08), clone 2B11.

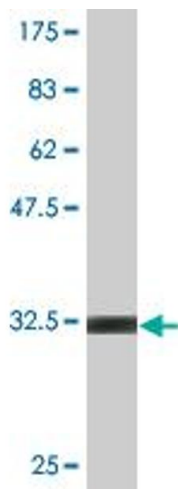
Lane 1: CHFR transfected lysate(72.1 KDa).

Lane 2: Non-transfected lysate.



ELISA

Image 2. Detection limit for recombinant GST tagged CHFR is 0.03 ng/ml as a capture antibody.



Western Blotting

Image 3. Western Blot detection against Immunogen (32.12 KDa).