



[Go to Product page](#)

Datasheet for ABIN527676

anti-DEPDC1B antibody (AA 430-529)

2 Images

Overview

Quantity:	100 µg
Target:	DEPDC1B
Binding Specificity:	AA 430-529
Reactivity:	Human
Host:	Mouse
Clonality:	Monoclonal
Conjugate:	This DEPDC1B antibody is un-conjugated
Application:	ELISA, Western Blotting (WB)

Product Details

Purpose:	Mouse monoclonal antibody raised against a partial recombinant DEPDC1B.
Immunogen:	DEPDC1B (NP_060839.1, 430 a.a. ~ 529 a.a) partial recombinant protein with GST tag. MW of the GST tag alone is 26 KDa.
Sequence:	SFCRQISPEE FEYQRSYGSQ EPLAALLEEV ITDAKLSNKE KKKKLLKQFQK SYPEVYQERF PTPESAALLF PEKPKPKPQL LMWALKKPFQ PFQRTRSRM
Clone:	2H2
Isotype:	IgG2b
Cross-Reactivity:	Human
Characteristics:	Antibody Reactive Against Recombinant Protein.

Target Details

Target:	DEPDC1B
Alternative Name:	DEPDC1B (DEPDC1B Products)
Background:	Full Gene Name: DEP domain containing 1B Synonyms: BRCC3,FLJ11252,XTP1
Gene ID:	55789
NCBI Accession:	NM_018369

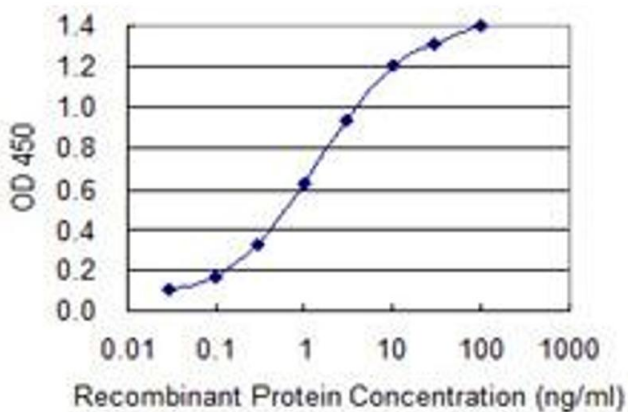
Application Details

Application Notes:	Optimal working dilution should be determined by the investigator.
Restrictions:	For Research Use only

Handling

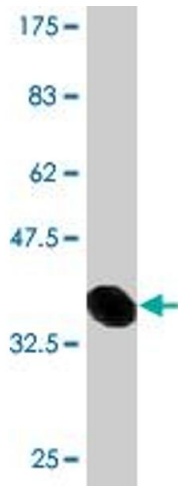
Buffer:	In 1x PBS, pH 7.4
Handling Advice:	Aliquot to avoid repeated freezing and thawing.
Storage:	-20 °C
Storage Comment:	Store at -20°C or lower. Aliquot to avoid repeated freezing and thawing.

Images



ELISA

Image 1. Detection limit for recombinant GST tagged DEPDC1B is 0.03 ng/ml as a capture antibody.



Western Blotting

Image 2. Western Blot detection against Immunogen (36.74 kDa).