



[Go to Product page](#)

Datasheet for ABIN527688
anti-DCP1A antibody (AA 1-582)

2 Images

Overview

Quantity:	50 µg
Target:	DCP1A
Binding Specificity:	AA 1-582
Reactivity:	Human
Host:	Mouse
Clonality:	Polyclonal
Conjugate:	This DCP1A antibody is un-conjugated
Application:	Western Blotting (WB)

Product Details

Purpose:	Mouse polyclonal antibody raised against a full-length human DCP1A protein.
Immunogen:	DCP1A (AAH07439.1, 1 a.a. ~ 582 a.a) full-length human protein.
Sequence:	MEALSRAGQE MSLAALKQHD PYITSIADLT GQVALYTFCP KANQWEKTDI EGTLFVYRRS ASPHYGFTIV NRLNMHNLVE PVNKDLEFQL HEPFLLYRNA SLSIYSIWFY DKNDCHRIAK LMADVVEEET RRSQQAARDK QSPSQANGCS DHRPIDILEM LSRKDEYER NQMGDSNISS PGLQPSTQLS NLGSTETLEE MPSPSQDKSA PSGHKHLTVE ELFGTSLPKE QPAVVGLDSE EMERLPGDAS QKEPNSFLPF PFEQLGGAPQ SETLGVPSAA HHSVQPEITT PVLITPASIT QSNEKHAPTY TIPLSPVLSP TLPAEAPTAQ VPPSLPRNST MMQAVKTTTPR QRSPLLNPV PELSHASLIA NQSPFRAPLN VTNTAGTSLP SVDLLQKLRL TPQHDQIQTQ PLGKGAMVAS FSPAAGQLAT PESFIEPPSK TAAARVAASA SLSNMVLAPL QSMQQNQDPE VFVQPKVLSS AIPVAGAPLV TATTTAVSSV LLAPSVFQQT VTRSSDLERK ASSPSPLTIG TPESQRKPSI ILSKSQLQDT LIHLIKNDSS FLSTLHEVYL QVLTKNKDNH NL

Product Details

Cross-Reactivity:	Human, Rat
Characteristics:	Antibody reactive against mammalian transfected lysate.

Target Details

Target:	DCP1A
Alternative Name:	DCP1A (DCP1A Products)
Background:	Full Gene Name: DCP1 decapping enzyme homolog A (<i>S. cerevisiae</i>) Synonyms: FLJ21691,HSA275986,Nbla00360,SMAD4IP1,SMIF
Gene ID:	55802

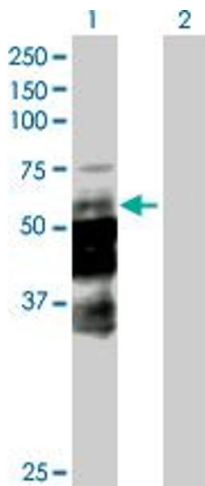
Application Details

Application Notes:	Optimal working dilution should be determined by the investigator.
Restrictions:	For Research Use only

Handling

Buffer:	In 1x PBS, pH 7.4
Handling Advice:	Aliquot to avoid repeated freezing and thawing.
Storage:	-20 °C
Storage Comment:	Store at -20°C or lower. Aliquot to avoid repeated freezing and thawing.

Images

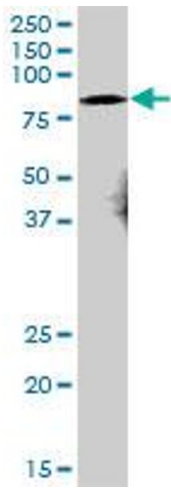


Western Blotting

Image 1. Western Blot analysis of DCP1A expression in transfected 293T cell line by DCP1A MaxPab polyclonal antibody.

Lane 1: DCP1A transfected lysate(64.02 KDa).

Lane 2: Non-transfected lysate.



Western Blotting

Image 2. DCP1A MaxPab polyclonal antibody. Western Blot analysis of DCP1A expression in rat brain.