



[Go to Product page](#)

Datasheet for ABIN527691
anti-DCP1A antibody (AA 186-285)

3 Images

Overview

Quantity:	100 µg
Target:	DCP1A
Binding Specificity:	AA 186-285
Reactivity:	Human
Host:	Mouse
Clonality:	Monoclonal
Conjugate:	This DCP1A antibody is un-conjugated
Application:	Western Blotting (WB), ELISA, Immunofluorescence (IF)

Product Details

Purpose:	Mouse monoclonal antibody raised against a partial recombinant DCP1A.
Immunogen:	DCP1A (NP_060873, 186 a.a. ~ 285 a.a) partial recombinant protein with GST tag. MW of the GST tag alone is 26 KDa.
Sequence:	STQLSNL GST ETLEEMP SGSG QDKSAPSGHK HLTVEELFGT SLPKEQPAVV GLDSEEMERL PGDASQKEPN SFLPFPFEQL GGAPQSETLG VPSAAHHSVQ
Clone:	2F11
Isotype:	IgG1
Cross-Reactivity:	Human
Characteristics:	Antibody Reactive Against Recombinant Protein.

Target Details

Target:	DCP1A
Alternative Name:	DCP1A (DCP1A Products)
Background:	Full Gene Name: DCP1 decapping enzyme homolog A (<i>S. cerevisiae</i>) Synonyms: FLJ21691,HSA275986,Nbla00360,SMAD4IP1,SMIF
Gene ID:	55802
NCBI Accession:	NM_018403

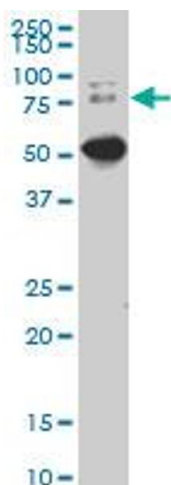
Application Details

Application Notes:	Optimal working dilution should be determined by the investigator.
Restrictions:	For Research Use only

Handling

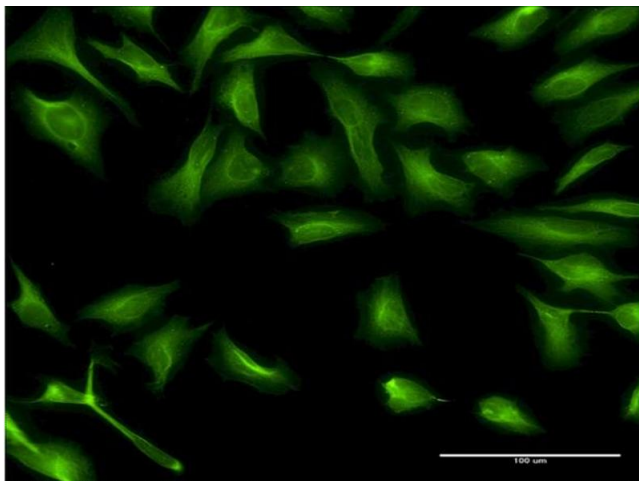
Buffer:	In 1x PBS, pH 7.4
Handling Advice:	Aliquot to avoid repeated freezing and thawing.
Storage:	-20 °C
Storage Comment:	Store at -20°C or lower. Aliquot to avoid repeated freezing and thawing.

Images



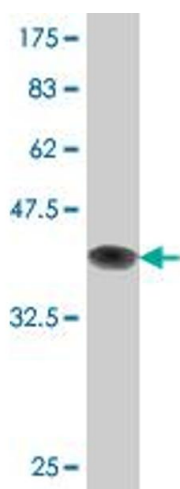
Western Blotting

Image 1. DCP1A monoclonal antibody (M02), clone 2F11.
Western Blot analysis of DCP1A expression in IMR-32 .



Immunofluorescence

Image 2. Immunofluorescence of monoclonal antibody to DCP1A on HeLa cell. [antibody concentration 10 ug/ml]



Western Blotting

Image 3. Western Blot detection against Immunogen (36.74 KDa) .