

Datasheet for ABIN527748
anti-HDAC8 antibody (AA 1-100)[Go to Product page](#)

4 Images

Overview

Quantity:	100 µg
Target:	HDAC8
Binding Specificity:	AA 1-100
Reactivity:	Human
Host:	Mouse
Clonality:	Monoclonal
Conjugate:	This HDAC8 antibody is un-conjugated
Application:	Western Blotting (WB), ELISA, Immunoprecipitation (IP)

Product Details

Purpose:	Mouse monoclonal antibody raised against a partial recombinant HDAC8.
Immunogen:	HDAC8 (NP_060956.1, 1 a.a. ~ 100 a.a) partial recombinant protein with GST tag. MW of the GST tag alone is 26 KDa.
Sequence:	MEEPEPADS GQSLVPVYIY SPEYVSMCDL LAKIPKRASM VHSLIEAYAL HKQMRIVKPK VASMEEMATF HTDAYLQHLQ KVSQEGDDDH PDSIEYGLGY
Clone:	2F4
Isotype:	IgG2a
Cross-Reactivity:	Human
Characteristics:	Antibody Reactive Against Recombinant Protein.

Target Details

Target:	HDAC8
Alternative Name:	HDAC8 (HDAC8 Products)
Background:	Full Gene Name: histone deacetylase 8 Synonyms: HDACL1,RPD3
Gene ID:	55869
NCBI Accession:	NM_018486
Pathways:	Cellular Glucan Metabolic Process

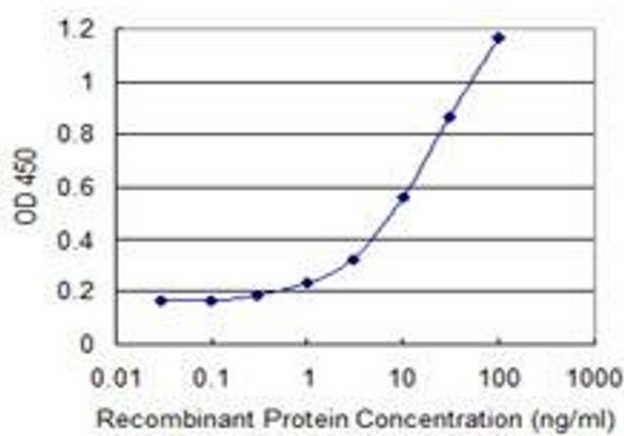
Application Details

Application Notes:	Optimal working dilution should be determined by the investigator.
Restrictions:	For Research Use only

Handling

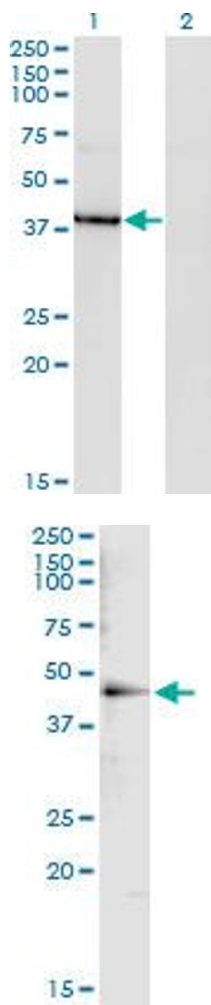
Buffer:	In 1x PBS, pH 7.4
Handling Advice:	Aliquot to avoid repeated freezing and thawing.
Storage:	-20 °C
Storage Comment:	Store at -20°C or lower. Aliquot to avoid repeated freezing and thawing.

Images



ELISA

Image 1. Detection limit for recombinant GST tagged HDAC8 is 0.3 ng/ml as a capture antibody.



Western Blotting

Image 2. Western Blot analysis of HDAC8 expression in transfected 293T cell line by HDAC8 monoclonal antibody (M07), clone 2F4.

Lane 1: HDAC8 transfected lysate(41.8 KDa).

Lane 2: Non-transfected lysate.

Immunoprecipitation

Image 3. Immunoprecipitation of HDAC8 transfected lysate using anti-HDAC8 monoclonal antibody and Protein A Magnetic Bead , and immunoblotted with HDAC8 MaxPab rabbit polyclonal antibody.

Please check the [product details page](#) for more images. Overall 4 images are available for ABIN527748.