



Datasheet for ABIN527764  
**anti-Gasdermin B antibody (AA 1-411)**



[Go to Product page](#)

3 Images

Overview

Quantity:	100 µg
Target:	Gasdermin B (GSDMB)
Binding Specificity:	AA 1-411
Reactivity:	Human
Host:	Mouse
Clonality:	Monoclonal
Conjugate:	This Gasdermin B antibody is un-conjugated
Application:	Western Blotting (WB), ELISA, Immunofluorescence (IF)

Product Details

Purpose:	Mouse monoclonal antibody raised against a full-length recombinant GSDML.
Immunogen:	GSDML (AAH25682, 1 a.a. ~ 411 a.a) full-length recombinant protein with GST tag. MW of the GST tag alone is 26 KDa.
Sequence:	MFSVFEEITR IVVKEMDAGG DMI AVRSLVD ADRFRCFHLV GEKRTFFGCR HYTTGLTLMD ILD TDGDKWL DELD SGLQGQ KA EFQILDNV DSTGELIVRL PKEITISGSF QGFHHQKIKI SENRI SQYL ATLENRKLKR ELPFSFRSIN TRENLYLVTE TLETVKEETL KSDRQYK FWS QISQGHLSYK HKGQREVTIP PNRVLSYRVK QLVFPNKETM SAGLDIHFRG KTKSFPEGKS LGSEDSRNMK EKLEDMESVL KDLTEEKRKD VLNSLAKCLG KEDIRQDLEQ RVSEVLISRE LHMEDSDKPL LSSLFNAAGV LVEARAKAIL DFLDALLELS EEQQFVAEAL EKGTLPLPKD QVKSVMEQNW DELASSPPDM DYDPEARILC ALYVVVSILL ELAEGPTSVS S
Clone:	1E10

## Product Details

---

Isotype:	IgG2a
Cross-Reactivity:	Human
Characteristics:	Antibody Reactive Against Recombinant Protein.

## Target Details

---

Target:	Gasdermin B (GSDMB)
Alternative Name:	GSDMB ( <a href="#">GSDMB Products</a> )
Background:	Full Gene Name: gasdermin B Synonyms: GSDML,PP4052,PRO2521
Gene ID:	55876

## Application Details

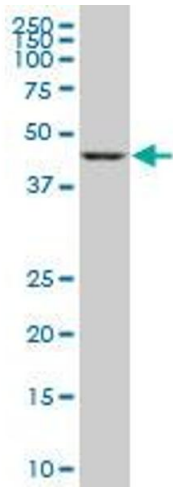
---

Application Notes:	Optimal working dilution should be determined by the investigator.
Restrictions:	For Research Use only

## Handling

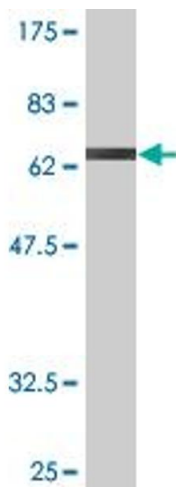
---

Buffer:	In 1x PBS, pH 7.4
Handling Advice:	Aliquot to avoid repeated freezing and thawing.
Storage:	-20 °C
Storage Comment:	Store at -20°C or lower. Aliquot to avoid repeated freezing and thawing.



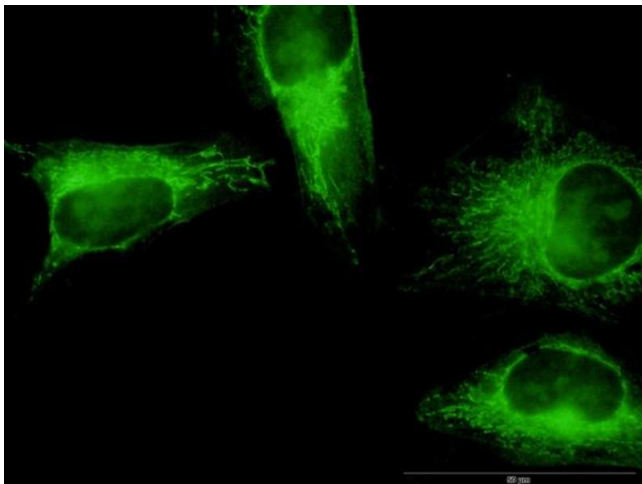
#### Western Blotting

**Image 1.** GSDML monoclonal antibody (M05), clone 1E10. Western Blot analysis of GSDML expression in A-431 .



#### Western Blotting

**Image 2.** Western Blot detection against Immunogen (70.95 kDa) .



#### Immunofluorescence

**Image 3.** Immunofluorescence of monoclonal antibody to GSDMB on HeLa cell. [antibody concentration 20 ug/ml]