



[Go to Product page](#)

Datasheet for ABIN527792
anti-BIN3 antibody (AA 1-199)

1 Image

Overview

Quantity:	50 µg
Target:	BIN3
Binding Specificity:	AA 1-199
Reactivity:	Human
Host:	Mouse
Clonality:	Polyclonal
Conjugate:	This BIN3 antibody is un-conjugated
Application:	Western Blotting (WB)

Product Details

Purpose:	Mouse polyclonal antibody raised against a full-length human BIN3 protein.
Immunogen:	BIN3 (AAH01223.1, 1 a.a. ~ 199 a.a) full-length human protein.
Sequence:	MSKSAVKISL DLLSNPLCEQ DQDLLNMVTA LDTAMKRMDA FNQEKVNQIQ KTVIEPLKKF GSVFPSLNMA VKRREQALQD YRRLQAKVEK YEEKEKTGPV LAKLHQAREE LRPVREDFEA KNRQLLEEMP RFYGSRLDYF QPSFESLIRA QV VYYSEM HK IFGDL SHQLD QPGHSDEQRE RENEAKLSEL RALSIVADD
Cross-Reactivity:	Human
Characteristics:	Antibody reactive against mammalian transfected lysate.

Target Details

Target:	BIN3
---------	------

Target Details

Alternative Name:	BIN3 (BIN3 Products)
Background:	Full Gene Name: bridging integrator 3 Synonyms: MGC14978
Gene ID:	55909

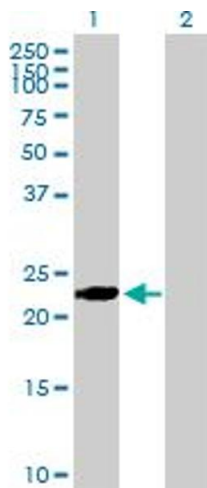
Application Details

Application Notes:	Optimal working dilution should be determined by the investigator.
Restrictions:	For Research Use only

Handling

Buffer:	In 1x PBS, pH 7.4
Handling Advice:	Aliquot to avoid repeated freezing and thawing.
Storage:	-20 °C
Storage Comment:	Store at -20°C or lower. Aliquot to avoid repeated freezing and thawing.

Images



Western Blotting

Image 1. Western Blot analysis of BIN3 expression in transfected 293T cell line by BIN3 MaxPab polyclonal antibody.

Lane 1: BIN3 transfected lysate(21.89 KDa).

Lane 2: Non-transfected lysate.