

Datasheet for ABIN527793
anti-BIN3 antibody (AA 1-199)



[Go to Product page](#)

1 Image

Overview

Quantity:	200 µL
Target:	BIN3
Binding Specificity:	AA 1-199
Reactivity:	Human
Host:	Mouse
Clonality:	Monoclonal
Conjugate:	This BIN3 antibody is un-conjugated
Application:	Western Blotting (WB), ELISA

Product Details

Purpose:	Mouse monoclonal antibody raised against a full-length recombinant BIN3.
Immunogen:	BIN3 (AAH01223, 1 a.a. ~ 199 a.a) full-length recombinant protein with GST tag. MW of the GST tag alone is 26 KDa.
Sequence:	MSKSAVKISL DLLSNPLCEQ DQDLLNMVTA LDTAMKRMDA FNQEKVNQIQ KTVIEPLKKF GSVFPSLNMA VKRREQALQD YRRLQAKVEK YEEKEKTGPV LAKLHQAREE LRPVREDFEA KNRQLLEEMP RFGSRLDYF QPSFESLIRA QVVYYSEM HK IFGDLSHQLD QPGHSDEQRE RENEAKLSEL RALSIVADD
Clone:	3G3
Isotype:	IgG2a kappa
Cross-Reactivity:	Human

Target Details

Target:	BIN3
Alternative Name:	BIN3 (BIN3 Products)
Background:	Full Gene Name: bridging integrator 3 Synonyms: MGC14978
Gene ID:	55909

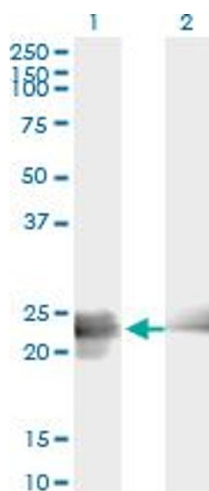
Application Details

Application Notes:	Optimal working dilution should be determined by the investigator.
Comment:	Product Quality tested by: Antibody Reactive Against Recombinant Protein.
Restrictions:	For Research Use only

Handling

Format:	Liquid
Buffer:	In ascites fluid
Handling Advice:	Aliquot to avoid repeated freezing and thawing.
Storage:	-20 °C
Storage Comment:	Store at -20°C or lower. Aliquot to avoid repeated freezing and thawing.

Images



Western Blotting

Image 1. Western Blot analysis of BIN3 expression in transfected 293T cell line by BIN3 monoclonal antibody (M01A), clone 3G3.

Lane 1: BIN3 transfected lysate (Predicted MW: 23.2 KDa).

Lane 2: Non-transfected lysate.