



[Go to Product page](#)

Datasheet for ABIN527796

anti-BIN3 antibody (AA 154-253)

2 Images

Overview

Quantity:	100 µg
Target:	BIN3
Binding Specificity:	AA 154-253
Reactivity:	Human
Host:	Mouse
Clonality:	Monoclonal
Conjugate:	This BIN3 antibody is un-conjugated
Application:	Western Blotting (WB), ELISA

Product Details

Purpose:	Mouse monoclonal antibody raised against a partial recombinant BIN3.
Immunogen:	BIN3 (NP_061158, 154 a.a. ~ 253 a.a) partial recombinant protein with GST tag. MW of the GST tag alone is 26 KDa.
Sequence:	VLAKLHQARE ELRPVREDFE AKNRQLLEEM PRFYGSRLDY FQPSFESLIR AQVVYYSEM KIFGDLSQL DQPGHSDEQR ERENEAKLSE LRALSIVADD
Clone:	4E12
Isotype:	IgG2a
Cross-Reactivity:	Human
Characteristics:	Antibody Reactive Against Recombinant Protein.

Target Details

Target:	BIN3
Alternative Name:	BIN3 (BIN3 Products)
Background:	Full Gene Name: bridging integrator 3 Synonyms: MGC14978
Gene ID:	55909
NCBI Accession:	NM_018688

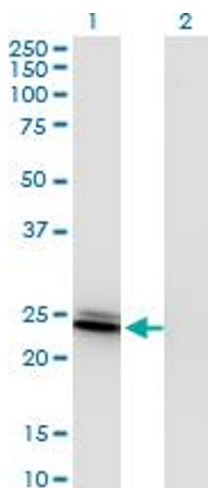
Application Details

Application Notes:	Optimal working dilution should be determined by the investigator.
Restrictions:	For Research Use only

Handling

Buffer:	In 1x PBS, pH 7.4
Handling Advice:	Aliquot to avoid repeated freezing and thawing.
Storage:	-20 °C
Storage Comment:	Store at -20°C or lower. Aliquot to avoid repeated freezing and thawing.

Images

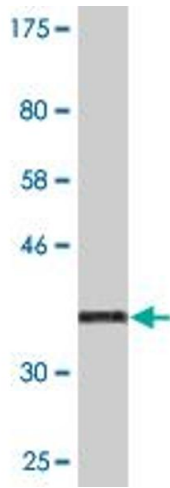


Western Blotting

Image 1. Western Blot analysis of BIN3 expression in transfected 293T cell line by BIN3 monoclonal antibody (M09), clone 4E12.

Lane 1: BIN3 transfected lysate(29.665 kDa).

Lane 2: Non-transfected lysate.



Western Blotting

Image 2. Western Blot detection against Immunogen (36.74 kDa).