



Datasheet for ABIN527803
anti-NKRF antibody (AA 591-690)



[Go to Product page](#)

3 Images

Overview

Quantity:	100 µg
Target:	NKRF
Binding Specificity:	AA 591-690
Reactivity:	Human
Host:	Mouse
Clonality:	Monoclonal
Conjugate:	This NKRF antibody is un-conjugated
Application:	Western Blotting (WB), ELISA

Product Details

Purpose:	Mouse monoclonal antibody raised against a partial recombinant NKRF.
Immunogen:	NKRF (NP_060014.2, 591 a.a. ~ 690 a.a) partial recombinant protein with GST tag. MW of the GST tag alone is 26 KDa.
Sequence:	LGLDVERVNK IAKRDIEQII RNYARSESHT DLTF SREL TN DERKQIHQIA QKYGLKSKSH GVGHDRYL VV GRKRRKEDLL DQLKQEGQVG HYELVMPQAN
Clone:	1F6
Isotype:	IgG2a
Cross-Reactivity:	Human
Characteristics:	Antibody Reactive Against Recombinant Protein.

Target Details

Target:	NKRF
Alternative Name:	NKRF (NKRF Products)
Background:	Full Gene Name: NFKB repressing factor Synonyms: ITBA4,NRF
Gene ID:	55922
NCBI Accession:	NM_017544

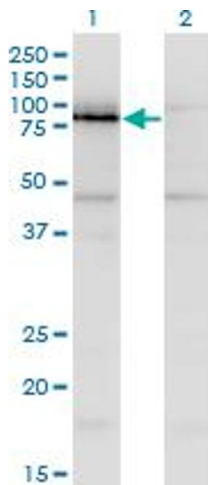
Application Details

Application Notes:	Optimal working dilution should be determined by the investigator.
Restrictions:	For Research Use only

Handling

Buffer:	In 1x PBS, pH 7.4
Handling Advice:	Aliquot to avoid repeated freezing and thawing.
Storage:	-20 °C
Storage Comment:	Store at -20°C or lower. Aliquot to avoid repeated freezing and thawing.

Images

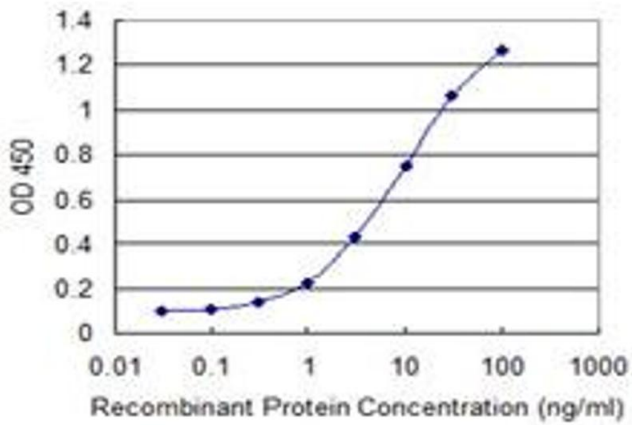


Western Blotting

Image 1. Western Blot analysis of NKRF expression in transfected 293T cell line by NKRF monoclonal antibody (M06), clone 1F6.

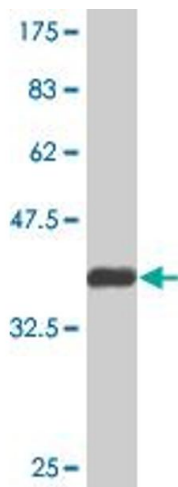
Lane 1: NKRF transfected lysate(77.7 KDa).

Lane 2: Non-transfected lysate.



ELISA

Image 2. Detection limit for recombinant GST tagged NKRF is 0.1 ng/ml as a capture antibody.



Western Blotting

Image 3. Western Blot detection against Immunogen (36.74 kDa).