



[Go to Product page](#)

Datasheet for ABIN527809

anti-Apolipoprotein M antibody (AA 1-188)

1 Image

Overview

Quantity:	100 µg
Target:	Apolipoprotein M (APOM)
Binding Specificity:	AA 1-188
Reactivity:	Human
Host:	Rabbit
Clonality:	Polyclonal
Conjugate:	This Apolipoprotein M antibody is un-conjugated
Application:	Western Blotting (WB)

Product Details

Purpose:	Rabbit polyclonal antibody raised against a full-length human APOM protein.
Immunogen:	APOM (NP_061974.2, 1 a.a. ~ 188 a.a) full-length human protein.
Sequence:	MFHQIWAALL YFYGIILNSI YQCPEHSQLT TLGVDGKEFP EVHLGQWYFI AGAAPTKEEL ATFDPVDNIV FNMAAGSAPM QLHLRATIRM KDGLCVPRKW IYHLTEGSTD LRTEGRPDMK TELFSSSCP GIMLNETGQG YQRFLLYNRS PHPPEKCVVE FKSLTSC LDS KAFLLTPRNQ EACELSNN
Cross-Reactivity:	Human
Characteristics:	Antibody reactive against mammalian transfected lysate.

Target Details

Target:	Apolipoprotein M (APOM)
---------	-------------------------

Target Details

Alternative Name:	APOM (APOM Products)
Background:	Full Gene Name: apolipoprotein M Synonyms: G3a,HSPC336,MGC22400,NG20
Gene ID:	55937
NCBI Accession:	NM_019101

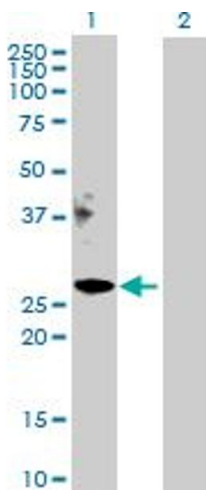
Application Details

Application Notes:	Optimal working dilution should be determined by the investigator.
Restrictions:	For Research Use only

Handling

Buffer:	In 1x PBS, pH 7.4
Handling Advice:	Aliquot to avoid repeated freezing and thawing.
Storage:	-20 °C
Storage Comment:	Store at -20°C or lower. Aliquot to avoid repeated freezing and thawing.

Images



Western Blotting

Image 1. Western Blot analysis of APOM expression in transfected 293T cell line by APOM MaxPab polyclonal antibody.

Lane 1: APOM transfected lysate(21.30 KDa).

Lane 2: Non-transfected lysate.