



[Go to Product page](#)

Datasheet for ABIN527817

anti-SULF2 antibody (AA 1-149)

1 Image

Overview

Quantity:	100 µg
Target:	SULF2
Binding Specificity:	AA 1-149
Reactivity:	Human
Host:	Mouse
Clonality:	Monoclonal
Conjugate:	This SULF2 antibody is un-conjugated
Application:	ELISA

Product Details

Purpose:	Mouse monoclonal antibody raised against a full-length recombinant SULF2.
Immunogen:	SULF2 (AAH20962, 1 a.a. ~ 149 a.a) full-length recombinant protein with GST tag. MW of the GST tag alone is 26 KDa.
Sequence:	MPGLTCFTHD NQHWQTAPFW TLGPFCACTS ANNNTYWCMR TINETHNFLF CEFATGFLEY FDLNTDPYQL MNAVNTLDRD VLNQLHVQLM ELRSCKGYKQ CNPRTNMDL GLKDGGSYEQ YRQFQRRKWP EMKRPSSKSL GQLWEGWEG
Clone:	2H5
Isotype:	IgG2a
Cross-Reactivity:	Human
Characteristics:	Antibody Reactive Against Recombinant Protein.

Target Details

Target:	SULF2
Alternative Name:	SULF2 (SULF2 Products)
Background:	Full Gene Name: sulfatase 2 Synonyms: DKFZp313E091,FLJ90554,HSULF-2,KIAA1247,MGC126411
Gene ID:	55959

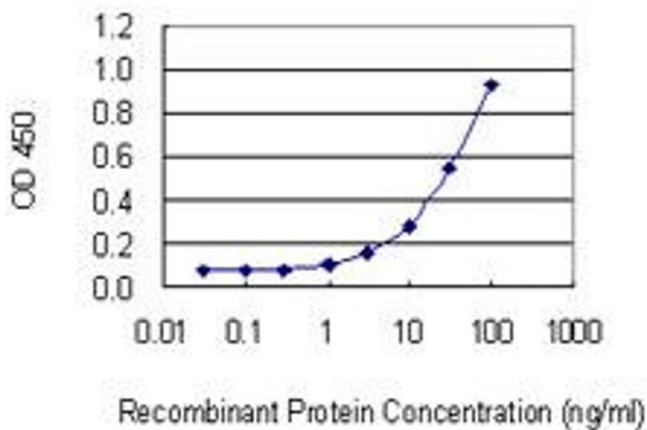
Application Details

Application Notes:	Optimal working dilution should be determined by the investigator.
Restrictions:	For Research Use only

Handling

Buffer:	In 1x PBS, pH 7.4
Handling Advice:	Aliquot to avoid repeated freezing and thawing.
Storage:	-20 °C
Storage Comment:	Store at -20°C or lower. Aliquot to avoid repeated freezing and thawing.

Images



ELISA

Image 1. Detection limit for recombinant GST tagged SULF2 is 0.3 ng/ml as a capture antibody.