

Datasheet for ABIN527819
anti-NSFL1C antibody (AA 1-370)



[Go to Product page](#)

3 Images

Overview

Quantity:	50 µg
Target:	NSFL1C
Binding Specificity:	AA 1-370
Reactivity:	Human
Host:	Mouse
Clonality:	Polyclonal
Conjugate:	This NSFL1C antibody is un-conjugated
Application:	Western Blotting (WB), Immunofluorescence (IF)

Product Details

Purpose:	Mouse polyclonal antibody raised against a full-length human NSFL1C protein.
Immunogen:	NSFL1C (NP_057227, 1 a.a. ~ 370 a.a) full-length human protein.
Sequence:	MAAERQEALR EFVAVTGAEE DRARFFLESA GWDLQIALAS FYEDGGDEDI VTISQATPSS VSRGTAPSDN RVTSFRDLIH DQDEDEEEEEE GQRFYAGGSE RSGQQIVGPP RKKSPNELVD DLFKGAKEHG AVAVERVTKS PGETSKPRPF AGGGYRLGAA PEEESAYVAG EKROHSSQDV HVVLKLWKSG FSLDNGELRS YQDPSNAQFL ESIRRGVPA ELRRLAHGGQ VNLDMEDHRD EDFVKPKGAF KAFTGEGQKL GSTAPQVLST SSPAQAENE AKASSSILID ESEPTTNIQI RLADGGRLVQ KFNHSHRISD IRLFIVDARP AMAATSFILM TTFPNKELAD ESQTLKEANL LNAVIVQRLT
Cross-Reactivity:	Human
Characteristics:	Antibody reactive against mammalian transfected lysate.

Target Details

Target:	NSFL1C
Alternative Name:	NSFL1C (NSFL1C Products)
Background:	Full Gene Name: NSFL1 (p97) cofactor (p47) Synonyms: MGC3347,UBX1,UBXD10,UBXN2C,dJ776F14.1,p47
Gene ID:	55968
NCBI Accession:	NM_016143

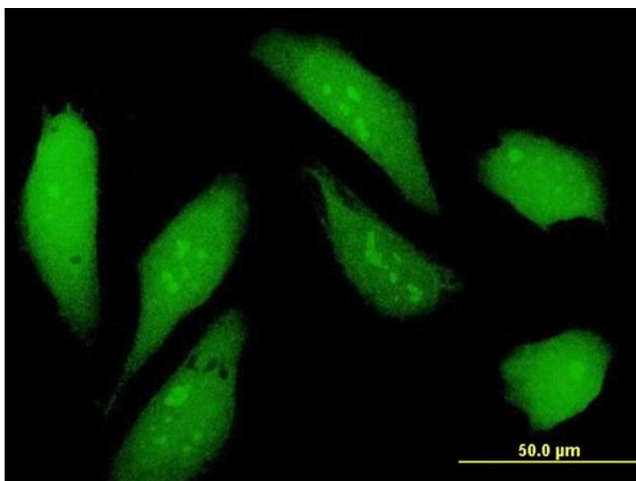
Application Details

Application Notes:	Optimal working dilution should be determined by the investigator.
Restrictions:	For Research Use only

Handling

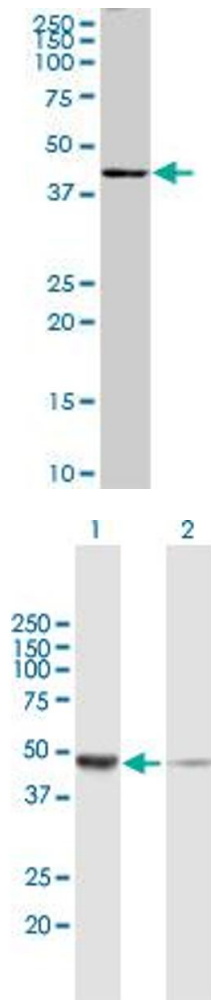
Buffer:	In 1x PBS, pH 7.4
Handling Advice:	Aliquot to avoid repeated freezing and thawing.
Storage:	-20 °C
Storage Comment:	Store at -20°C or lower. Aliquot to avoid repeated freezing and thawing.

Images



Immunofluorescence

Image 1. Immunofluorescence of purified MaxPab antibody to NSFL1C on HeLa cell. [antibody concentration 10 ug/ml]



Western Blotting

Image 2. NSFL1C MaxPab polyclonal antibody. Western Blot analysis of NSFL1C expression in human placenta.

Western Blotting

Image 3. Western Blot analysis of NSFL1C expression in transfected 293T cell line by NSFL1C MaxPab polyclonal antibody.

Lane 1: NSFL1C transfected lysate(40.7 kDa).

Lane 2: Non-transfected lysate.