



[Go to Product page](#)

Datasheet for ABIN527821  
**anti-SLC25A40 antibody (AA 1-338)**

1 Image

Overview

Quantity:	50 µg
Target:	SLC25A40
Binding Specificity:	AA 1-338
Reactivity:	Human
Host:	Mouse
Clonality:	Polyclonal
Conjugate:	This SLC25A40 antibody is un-conjugated
Application:	Western Blotting (WB)

Product Details

Purpose:	Mouse polyclonal antibody raised against a full-length human MCFP protein.
Immunogen:	MCFP (NP_061331, 1 a.a. ~ 338 a.a) full-length human protein.
Sequence:	MDPETRGQEI IKVTPLQQML ASCTGAILTS VIVTPLDVVK IRLQAQNNPL PKGKCFVYSN GLMDHLCVCE EGGNKLWYKK PGNFQGTLD A FFKIIRNEGI KSLWSGLPPT LVMAVPATVI YFTCYDQLSA LLRSKLG ENE TCIPVAGIV ARFGAVTVIS PLELIRTKMQ SKKFSYVELH RFVSKKVS ED GWISLWRGWA PTVLRDVPFS AMYWYNYEIL KKWLCCKSGL YEPTFMINFT SGALSGSFAA VATLPFDVVK TQKQTQLWTY ESHKISMPLH MSTWIIMKNI VAKNGFSGLF SGLIPRLIKI APACAIMIST YEFGKAFFQK QNVR RQOY
Cross-Reactivity:	Human
Characteristics:	Antibody reactive against mammalian transfected lysate.

## Target Details

Target:	SLC25A40
Alternative Name:	SLC25A40 ( <a href="#">SLC25A40 Products</a> )
Background:	Full Gene Name: solute carrier family 25, member 40 Synonyms: MCFP
Gene ID:	55972
NCBI Accession:	<a href="#">NM_018843</a>

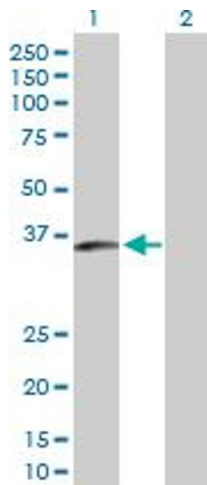
## Application Details

Application Notes:	Optimal working dilution should be determined by the investigator.
Restrictions:	For Research Use only

## Handling

Buffer:	In 1x PBS, pH 7.4
Handling Advice:	Aliquot to avoid repeated freezing and thawing.
Storage:	-20 °C
Storage Comment:	Store at -20°C or lower. Aliquot to avoid repeated freezing and thawing.

## Images



### Western Blotting

**Image 1.** Western Blot analysis of SLC25A40 expression in transfected 293T cell line by SLC25A40 MaxPab polyclonal antibody.

Lane 1: MCFP transfected lysate(37.18 KDa).

Lane 2: Non-transfected lysate.