

Datasheet for ABIN527847
anti-Kelch-Like 4 antibody (AA 1-100)



[Go to Product page](#)

3 Images

Overview

Quantity:	100 µg
Target:	Kelch-Like 4 (KLHL4)
Binding Specificity:	AA 1-100
Reactivity:	Human
Host:	Mouse
Clonality:	Monoclonal
Conjugate:	This Kelch-Like 4 antibody is un-conjugated
Application:	Western Blotting (WB), ELISA

Product Details

Purpose:	Mouse monoclonal antibody raised against a partial recombinant KLHL4.
Immunogen:	KLHL4 (NP_061990, 1 a.a. ~ 100 a.a) partial recombinant protein with GST tag. MW of the GST tag alone is 26 KDa.
Sequence:	MSVSGKKEFD VKQILRLRWR WFSHPFQGST NTGSCLQQEG YEHRGTPVQG RLKSHSRDRN GLKKSNSPVH HNILAPVPGP APAHQRAVQN LQQHNLIVHF
Clone:	4B6
Isotype:	IgG2a
Cross-Reactivity:	Human
Characteristics:	Antibody Reactive Against Recombinant Protein.

Target Details

Target:	Kelch-Like 4 (KLHL4)
Alternative Name:	KLHL4 (KLHL4 Products)
Background:	Full Gene Name: kelch-like 4 (Drosophila) Synonyms: DKELCHL,KHL4,KIAA1687
Gene ID:	56062
NCBI Accession:	NM_019117

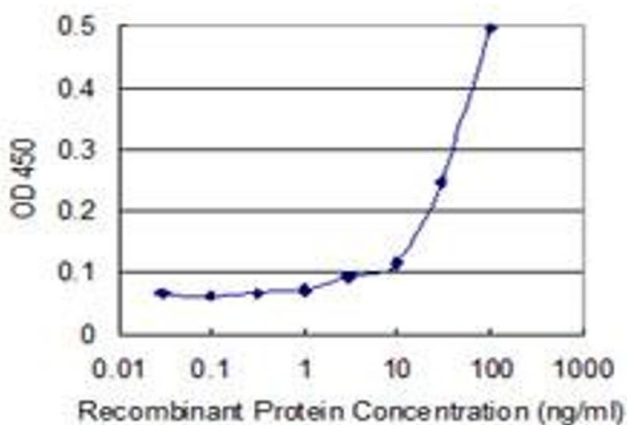
Application Details

Application Notes:	Optimal working dilution should be determined by the investigator.
Restrictions:	For Research Use only

Handling

Buffer:	In 1x PBS, pH 7.4
Handling Advice:	Aliquot to avoid repeated freezing and thawing.
Storage:	-20 °C
Storage Comment:	Store at -20°C or lower. Aliquot to avoid repeated freezing and thawing.

Images



ELISA

Image 1. Detection limit for recombinant GST tagged KLHL4 is 1 ng/ml as a capture antibody.

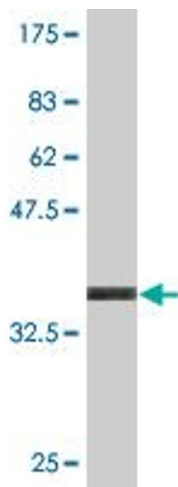


Western Blotting

Image 2. Western Blot analysis of KLHL4 expression in transfected 293T cell line by KLHL4 monoclonal antibody (M05), clone 4B6.

Lane 1: KLHL4 transfected lysate (Predicted MW: 80.2 kDa).

Lane 2: Non-transfected lysate.



Western Blotting

Image 3. Western Blot detection against Immunogen (36.74 kDa).