



[Go to Product page](#)

Datasheet for ABIN527888
anti-TEX13A antibody (AA 1-409)

3 Images

Overview

Quantity:	100 µL
Target:	TEX13A
Binding Specificity:	AA 1-409
Reactivity:	Human
Host:	Rabbit
Clonality:	Polyclonal
Conjugate:	This TEX13A antibody is un-conjugated
Application:	Western Blotting (WB), Immunoprecipitation (IP)

Product Details

Purpose:	Rabbit polyclonal antibody raised against a full-length human TEX13A protein.
Immunogen:	TEX13A (NP_112564.1, 1 a.a. ~ 409 a.a) full-length human protein.
Sequence:	MALRPEDPSS GFRHSNVVAF INEKMARHTK GPEFYLENIS LSWEKVEDKL RAILEDSEVP SEVKEACTWG SLALGVRFAH RQAQLQRHRV RWLHGFAKLH KSAAQALASD LKKLREQQET ERKEAASRLR MAQTSLVEVQ KERDKELVSP HEWEQGAGWP GLATAGGVCT EGAAEEEEEA AVAAAGAAGG KGAEQQRDV EVVAAPVEAM APPVEAGAAP METQFPHVEA RAASMETTEK LERILLQLLG DADQEKYTYW GQKEGDLRSV ETATSYFSGT TNPWSRASSE PLPVQLPASY SYSYSSPFSS FSDIPTISPP QATVTAPVPP QLPSDWEAFD TSLWSDGGPH RIDHQEHPRD RRYSEPHQQR PPVYRRPGDW DCPWCNAVNF SRRDTCFDCG KGIWLQKPH
Cross-Reactivity:	Human, Mouse
Characteristics:	Antibody reactive against mammalian transfected lysate.

Target Details

Target:	TEX13A
Alternative Name:	TEX13A (TEX13A Products)
Background:	Full Gene Name: testis expressed 13A Synonyms: MGC131984
Gene ID:	56157
NCBI Accession:	NM_031274

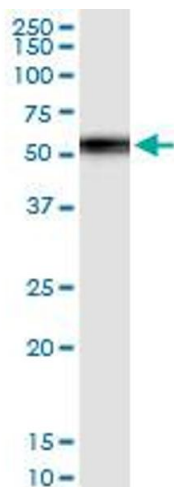
Application Details

Application Notes:	Optimal working dilution should be determined by the investigator.
Restrictions:	For Research Use only

Handling

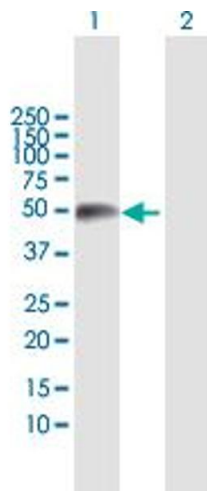
Format:	Liquid
Buffer:	No additive
Preservative:	Without preservative
Handling Advice:	Aliquot to avoid repeated freezing and thawing.
Storage:	-20 °C
Storage Comment:	Store at -20°C or lower. Aliquot to avoid repeated freezing and thawing.

Images



Immunoprecipitation

Image 1. Immunoprecipitation of TEX13A transfected lysate using anti-TEX13A MaxPab rabbit polyclonal antibody and Protein A Magnetic Bead , and immunoblotted with TEX13A MaxPab mouse polyclonal antibody (B01) .

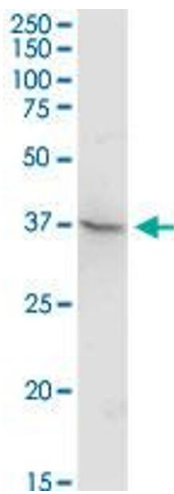


Western Blotting

Image 2. Western Blot analysis of TEX13A expression in transfected 293T cell line by TEX13A MaxPab polyclonal antibody.

Lane 1: TEX13A transfected lysate(45.6 kDa).

Lane 2: Non-transfected lysate.



Western Blotting

Image 3. TEX13A MaxPab rabbit polyclonal antibody. Western Blot analysis of TEX13A expression in mouse intestine.