

Datasheet for ABIN527895  
**anti-SUSD2 antibody (AA 1-822)**



[Go to Product page](#)

1 Image

Overview

Quantity:	50 µg
Target:	SUSD2
Binding Specificity:	AA 1-822
Reactivity:	Human
Host:	Mouse
Clonality:	Polyclonal
Conjugate:	This SUSD2 antibody is un-conjugated
Application:	Western Blotting (WB)

Product Details

Purpose:	Mouse polyclonal antibody raised against a full-length human SUSD2 protein.
Immunogen:	SUSD2 (NP_062547.1, 1 a.a. ~ 822 a.a) full-length human protein.
Sequence:	MKPALLPWAL LLLATALGPG PGPTADAQES CSMRCGALDG PCSCHPTCSG LGTCCLDFRD FCLEILPYSG SMMGGKDFV RHFKMSSPTD ASVICRFKDS IQTLGHVDSS GQVHCVSPLL YESGRIPFTV SLDNGHSFPR AGTWLAVHPN KVSMMEKSEL VNETR WQYYG TANTSGNLSL TWHVKSLPTQ TITIELWGYE ETGMPYSQEW TAKWSYLYPL ATHIPNSGSF TFTP KPAPPS YQRWRVGALR IIDSKNYAGQ KDVQALWTND HALAWHLSDD FREDPVAWAR TQCQAWEELE DQLPNFLEEL PDCPCTLTQA RADSGRFFTD YGCDMEQGSV CTYHPGAVHC VRSVQASLRY GSGQQCCYTA DGTQLLTADS SGGSTPDRGH DWGAPPFRTP PRVPSMSHWL YDVL SFYYCC LWAPDCPRYM QRRPSNDCRN YRPPRLASAF GDPHFVTFDG TNFTFN GRGE YVLL EAAALTD LRVQARAQPG TMSNGTETRG TGLTAVAVQE GNSDVVEVRL ANRTGGLEVL LNQEVL SFTE QSWMDLKGMF LSVAAGDRVS IMLASGAGLE VSVQGPFLSV SVLLPEKFLT HTHGLLGTLN

## Product Details

---

NDPTDDFTLH SGRVLPPGTS PQELFLFGAN WTVHNASSLL TYDSWFLVHN FLYQPKHDPT  
FEPLFPSETT LNPSLAQEAA KLCGDDHFCN FDVAATGSLT TGTATRVAHQ LHQRRMQSLQ  
PVVSCGWLAP PPNGQKEGNR YLAGSTIYFH CDNGYSLAGA ETSTCQADGT WSSPTPKCQP  
GRSYAVLLGI IFGGLAVVAA VALVYVLLRR RKGNTHWVGA QP

Cross-Reactivity: Human

Characteristics: Antibody reactive against mammalian transfected lysate.

## Target Details

---

Target: SUSD2

Alternative Name: SUSD2 ([SUSD2 Products](#))

Background: Full Gene Name: sushi domain containing 2  
Synonyms: BK65A6.2,FLJ22778

Gene ID: 56241

NCBI Accession: [NM\\_019601](#)

## Application Details

---

Application Notes: Optimal working dilution should be determined by the investigator.

Restrictions: For Research Use only

## Handling

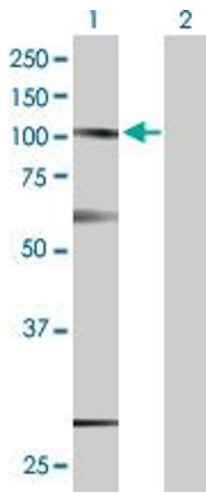
---

Buffer: In 1x PBS, pH 7.4

Handling Advice: Aliquot to avoid repeated freezing and thawing.

Storage: -20 °C

Storage Comment: Store at -20°C or lower. Aliquot to avoid repeated freezing and thawing.



### Western Blotting

**Image 1.** Western Blot analysis of SUSD2 expression in transfected 293T cell line by SUSD2 MaxPab polyclonal antibody.

Lane 1: SUSD2 transfected lysate(90.42 KDa).

Lane 2: Non-transfected lysate.