



Datasheet for ABIN527910  
**anti-PARD3 antibody (AA 1-1340)**



[Go to Product page](#)

2 Images

Overview

Quantity:	100 µg
Target:	PARD3
Binding Specificity:	AA 1-1340
Reactivity:	Human
Host:	Rabbit
Clonality:	Polyclonal
Conjugate:	This PARD3 antibody is un-conjugated
Application:	Western Blotting (WB), Proximity Ligation Assay (PLA)

Product Details

Purpose:	Rabbit polyclonal antibody raised against a full-length human PARD3 protein.
Immunogen:	PARD3 (AAH71566.1, 1 a.a. ~ 1340 a.a) full-length human protein.
Sequence:	MKVTVCFGRTRVVVPCGDGH MKVFSLIQQA VTRYRKAIAK DPNYWIQVHR LEHGDGGILD LDDILCDVAD DKDRLVAVFD EQDPHHGGDG TSASSTGTQS PEIFGSELGT NNVSAFQPYQ ATSEIEVTPS VLRANMPLHV RRSSDPALIG LSTSVSDSNF SSEEPSRKNP TRWSTTAGFL KQNTAGSPKT CDRKKDENYR SLPRDTSNWS NQFQRDNARS SLSASHPMVG KWLEKQEQDE DGTEEDNSRV EPVGHADTGL EHIPNFSLDD MVKLEVPND GGPLGIHVVP FSARGGRTL LLVKRLEKGG KAEHENLFRE NDCIVRINDG DLRNRRFEQA QHMFRQAMRT PIIWFHVPA ANKEQYEQLS QSEKNYYSS RFPDSQYID NRSVNSAGLH TVQRAPRLNH PPEQIDSHSR LPHSAHPSGK PPSAPASAPQ NVFSTTVSSG YNTKKIGKRL NIQLKKGTEG LGFSITSRDV TIGGSAPIYV KNILPRGAAI QDGRKAGDR LIEVNGVDLV GKSQEEVSL LRSTKMEGTV SLLVFRQEDA FHPRELKAED EDIVLTPDGT REFLTFEVPL NDSGSAGLGV SVKGNRSKEN

## Product Details

---

HADLGIFVKS IINGGAASKD GRLRVNDQLI AVNGESLLGK TNQDAMETLR RSMSTEGNKR  
GMIQLIVARR ISKCNELKSP GSPPGPELPI ETALDDRERR ISHSLYSGIE GLDESPSRNA  
ALSRIMGKYQ LSPTVNMPQD DTVIIEDNRL PVLPPHLSQ SSSSSHDDVG FVTADAGTWA  
KAAISDSADC SLSPDVPVL AFQREGFGRQ SMSEKRTKQF SDASQLDFVK TRKSKSMDLG  
IADETKLNTV DDQKAGSPSR DVGPSLGLKK SSSLESQTA VAEVTLNGDI PFHRPRPRII  
RGRGCNESFR AAIDKSYDKP AVDDDDEGME TLEEDTEESS RSGRESVSTA SDQPSHSLER  
QMNGNQEKGD KTDRKKDKTG KEKKKDRDKE KDKMKAKKGM LKGLGDMFRF GKHRKDDKIE  
KTGKIKIQES FTSEEERIRM KQEQERIQAK TREFRERQAR ERDYAEIQDF HRTFGCDEL  
MYGGVSSYEG SMALNARPQS PREGHMMDAL YAQVKKPRNS KPSPVDSNRS TPSNHDIQR  
LRQEFQQAQK DEDVEDRRRT YSFEQPWPNA RPATQSGRHS VSVEVQMQRQ RQEERESSQQ  
AQRQYSSLPR QSRKNASSVS QDSWEQNYSP GEGFQSAKEN PRYSSYQGSR NGYLGGHGFN  
ARVMLETQEL LRQEQRRKEQ QMKKQPPSEG PSNYDSYKKV QDPSYAPPKG PFRQDVPPSP  
SQVARLNRLQ TPEKGRPFYS

Cross-Reactivity: Human

Characteristics: Antibody reactive against mammalian transfected lysate.

## Target Details

---

Target: PARD3

Alternative Name: PARD3 ([PARD3 Products](#))

Background: Full Gene Name: par-3 partitioning defective 3 homolog (C. elegans)  
Synonyms: ASIP,Baz,Bazooka,FLJ21015,PAR3,PAR3alpha,PARD3A,SE2-5L16,SE2-5LT1,SE2-5T2

Gene ID: 56288

Pathways: [Cell-Cell Junction Organization](#)

## Application Details

---

Application Notes: Optimal working dilution should be determined by the investigator.

Restrictions: For Research Use only

## Handling

---

Buffer: In 1x PBS, pH 7.4

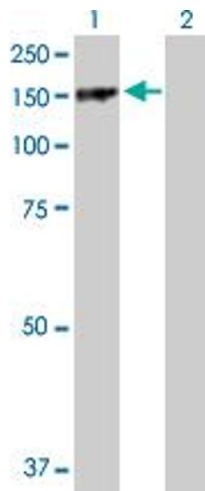
Handling Advice: Aliquot to avoid repeated freezing and thawing.

## Handling

Storage: -20 °C

Storage Comment: Store at -20°C or lower. Aliquot to avoid repeated freezing and thawing.

## Images

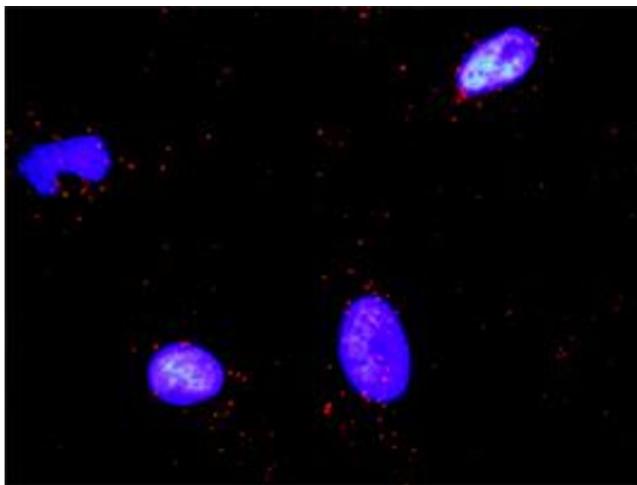


### Western Blotting

**Image 1.** Western Blot analysis of PARD3 expression in transfected 293T cell line by PARD3 MaxPab polyclonal antibody.

Lane 1: PARD3 transfected lysate(149.70 KDa).

Lane 2: Non-transfected lysate.



### Proximity Ligation Assay

**Image 2.** Proximity Ligation Analysis of protein-protein interactions between PARD3 and CTNNB1. HeLa cells were stained with anti-PARD3 rabbit purified polyclonal 1:1200 and anti-CTNNB1 mouse monoclonal antibody 1:50. Each red dot represents the detection of protein-protein interaction complex, and nuclei were counterstained with DAPI (blue).