



[Go to Product page](#)

Datasheet for ABIN527921

anti-EIF4ENIF1 antibody (AA 886-985)

3 Images

Overview

Quantity:	100 µg
Target:	EIF4ENIF1
Binding Specificity:	AA 886-985
Reactivity:	Human
Host:	Mouse
Clonality:	Monoclonal
Conjugate:	This EIF4ENIF1 antibody is un-conjugated
Application:	Western Blotting (WB), ELISA, Immunofluorescence (IF)

Product Details

Purpose:	Mouse monoclonal antibody raised against a partial recombinant EIF4ENIF1.
Immunogen:	EIF4ENIF1 (NP_062817, 886 a.a. ~ 985 a.a) partial recombinant protein with GST tag. MW of the GST tag alone is 26 KDa.
Sequence:	NPRPGTPLHL AMVQQQLQRS VLHPPGSGSH AAVSVQTTP QNVPSRSLP HMHSQLEHRP SQRSSSPVGL AKWFGSDVLQ QPLPSMPAKV ISVDELEYRQ
Clone:	2C4
Isotype:	IgG2a
Cross-Reactivity:	Human
Characteristics:	Antibody Reactive Against Recombinant Protein.

Target Details

Target:	EIF4ENIF1
Alternative Name:	EIF4ENIF1 (EIF4ENIF1 Products)
Background:	Full Gene Name: eukaryotic translation initiation factor 4E nuclear import factor 1 Synonyms: 4E-T,Clast4,FLJ21601,FLJ26551
Gene ID:	56478
NCBI Accession:	NM_019843

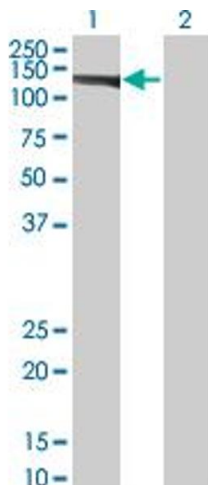
Application Details

Application Notes:	Optimal working dilution should be determined by the investigator.
Restrictions:	For Research Use only

Handling

Buffer:	In 1x PBS, pH 7.4
Handling Advice:	Aliquot to avoid repeated freezing and thawing.
Storage:	-20 °C
Storage Comment:	Store at -20°C or lower. Aliquot to avoid repeated freezing and thawing.

Images

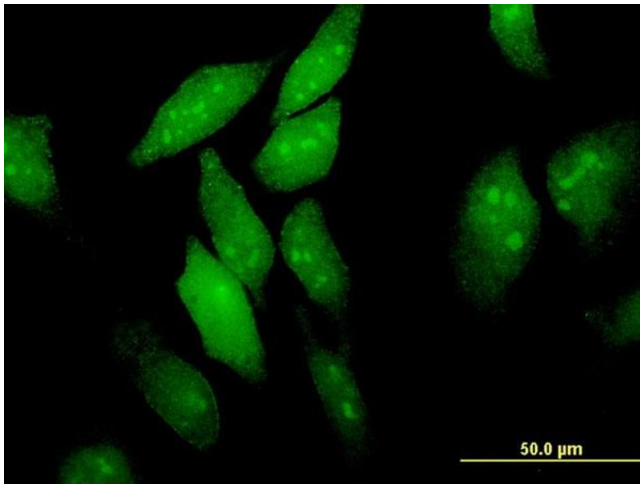


Western Blotting

Image 1. Western Blot analysis of EIF4ENIF1 expression in transfected 293T cell line by EIF4ENIF1 monoclonal antibody (M01), clone 2C4.

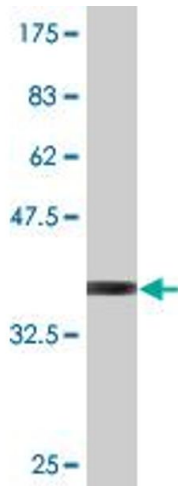
Lane 1: EIF4ENIF1 transfected lysate(108.201 kDa).

Lane 2: Non-transfected lysate.



Immunofluorescence

Image 2. Immunofluorescence of monoclonal antibody to EIF4ENIF1 on HeLa cell. [antibody concentration 10 ug/ml]



Western Blotting

Image 3. Western Blot detection against Immunogen (36.74 kDa).