

Datasheet for ABIN527926
anti-CYP26B1 antibody (AA 131-230)

4 Images

[Go to Product page](#)

Overview

| | |
|----------------------|---|
| Quantity: | 100 µg |
| Target: | CYP26B1 |
| Binding Specificity: | AA 131-230 |
| Reactivity: | Human |
| Host: | Mouse |
| Clonality: | Monoclonal |
| Conjugate: | This CYP26B1 antibody is un-conjugated |
| Application: | Western Blotting (WB), ELISA, Immunofluorescence (IF) |

Product Details

| | |
|-------------------|--|
| Purpose: | Mouse monoclonal antibody raised against a partial recombinant CYP26B1. |
| Immunogen: | CYP26B1 (NP_063938, 131 a.a. ~ 230 a.a) partial recombinant protein with GST tag. MW of the GST tag alone is 26 KDa. |
| Sequence: | SNSIGDIHRN KRKVFSKIFS HEALESYLPK IQLVIQDTLR AWSSHPEAIN VYQEAQKLTF RMAIRVLLGF SIPEEDLGHL FEVYQQFVDN VFSLPVDLPF |
| Clone: | 2G7 |
| Isotype: | IgG2a |
| Cross-Reactivity: | Human |
| Characteristics: | Antibody Reactive Against Recombinant Protein. |

Target Details

| | |
|-------------------|---|
| Target: | CYP26B1 |
| Alternative Name: | CYP26B1 (CYP26B1 Products) |
| Background: | Full Gene Name: cytochrome P450, family 26, subfamily B, polypeptide 1 Synonyms: CYP26A2,DKFZp686G0638,MGC129613,P450RAI-2 |
| Gene ID: | 56603 |
| NCBI Accession: | NM_019885 |
| Pathways: | Retinoic Acid Receptor Signaling Pathway , Regulation of Muscle Cell Differentiation , Monocarboxylic Acid Catabolic Process |

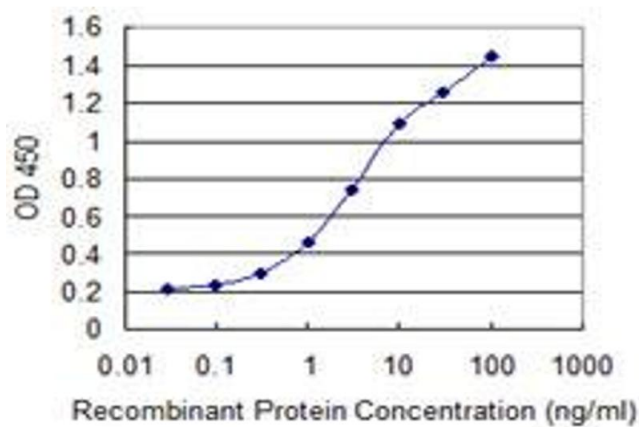
Application Details

| | |
|--------------------|--|
| Application Notes: | Optimal working dilution should be determined by the investigator. |
| Restrictions: | For Research Use only |

Handling

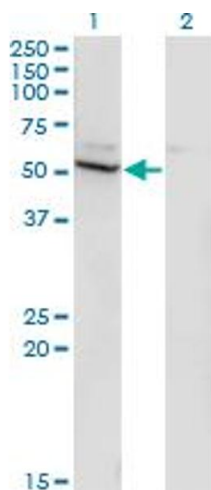
| | |
|------------------|--|
| Buffer: | In 1x PBS, pH 7.4 |
| Handling Advice: | Aliquot to avoid repeated freezing and thawing. |
| Storage: | -20 °C |
| Storage Comment: | Store at -20°C or lower. Aliquot to avoid repeated freezing and thawing. |

Images



ELISA

Image 1. Detection limit for recombinant GST tagged CYP26B1 is 0.1 ng/ml as a capture antibody.

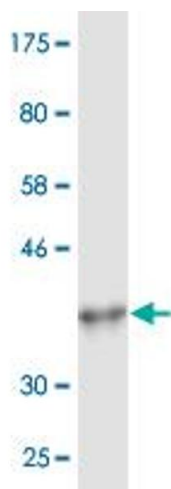


Western Blotting

Image 2. Western Blot analysis of CYP26B1 expression in transfected 293T cell line by CYP26B1 monoclonal antibody (M02), clone 2G7.

Lane 1: CYP26B1 transfected lysate (Predicted MW: 57.5 kDa).

Lane 2: Non-transfected lysate.



Western Blotting

Image 3. Western Blot detection against Immunogen (36.74 kDa).

Please check the [product details page](#) for more images. Overall 4 images are available for ABIN527926.