

Datasheet for ABIN527997
anti-SH3GLB2 antibody (AA 1-395)



[Go to Product page](#)

3 Images

Overview

Quantity:	50 µg
Target:	SH3GLB2
Binding Specificity:	AA 1-395
Reactivity:	Human
Host:	Mouse
Clonality:	Polyclonal
Conjugate:	This SH3GLB2 antibody is un-conjugated
Application:	Western Blotting (WB), Immunofluorescence (IF)

Product Details

Purpose:	Mouse polyclonal antibody raised against a full-length human SH3GLB2 protein.
Immunogen:	SH3GLB2 (NP_064530.1, 1 a.a. ~ 395 a.a) full-length human protein.
Sequence:	MDFNMKKLAS DAGIFFTRAV QFTEEKFGQA EKTELDAHFE NLLARADSTK NWTEKILRQT EVLLQPNPSA RVEEFLEYEKL DRKVPSRVTN GELLAQYMAD AASELGPTTP YGKTLIKVAE AEKQLGAAER DFIHTASISF LTPLRNFLEG DWKTISKERR LLQNRRLDL DACKARLKKAK AA EAKATTVP DFQETRPRNY ILSASASALW NDEVDKAEQE LRVAQTEFDR QAEVTRLLLL GISSTHVNHL RCLHEFVKSQ TTYAQCYRH MLDLQKQLGR FPGTFVGTTE PASPPLSSTS PTTAVATMPV VPSVASLAPP GEASLCLEEV APPASGTRKA RVLYDYEAAD SSELALLADE LITVYSLPGM DPDWLIGERG NKKGKVPPTY LLELLS
Cross-Reactivity:	Human
Characteristics:	Antibody reactive against mammalian transfected lysate.

Target Details

Target:	SH3GLB2
Alternative Name:	SH3GLB2 (SH3GLB2 Products)
Background:	Full Gene Name: SH3-domain GRB2-like endophilin B2 Synonyms: KIAA1848,PP6569,PP9455
Gene ID:	56904
NCBI Accession:	NM_020145

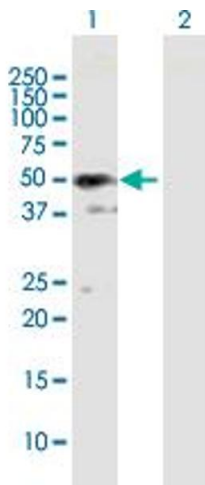
Application Details

Application Notes:	Optimal working dilution should be determined by the investigator.
Restrictions:	For Research Use only

Handling

Buffer:	In 1x PBS, pH 7.4
Handling Advice:	Aliquot to avoid repeated freezing and thawing.
Storage:	-20 °C
Storage Comment:	Store at -20°C or lower. Aliquot to avoid repeated freezing and thawing.

Images

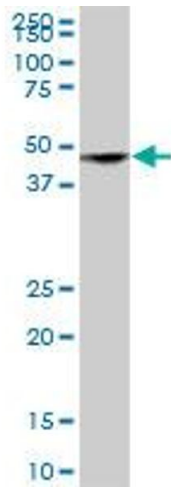


Western Blotting

Image 1. Western Blot analysis of SH3GLB2 expression in transfected 293T cell line by SH3GLB2 MaxPab polyclonal antibody.

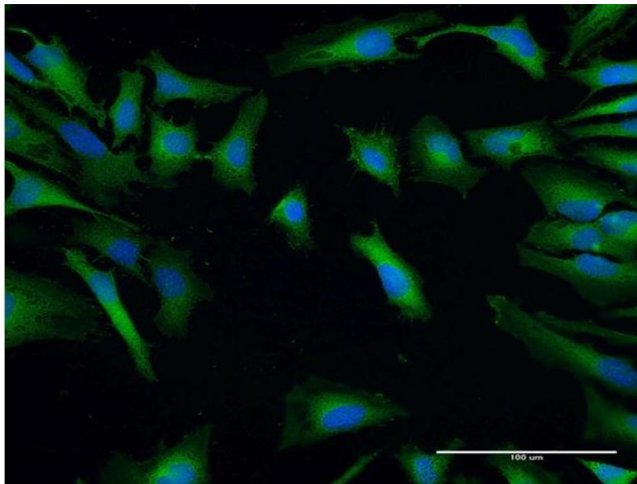
Lane 1: SH3GLB2 transfected lysate(43.45 KDa).

Lane 2: Non-transfected lysate.



Western Blotting

Image 2. SH3GLB2 MaxPab polyclonal antibody. Western Blot analysis of SH3GLB2 expression in human liver.



Immunofluorescence

Image 3. Immunofluorescence of purified MaxPab antibody to SH3GLB2 on HeLa cell. [antibody concentration 10 ug/ml]