



[Go to Product page](#)

Datasheet for ABIN528000

## anti-MAP3K7CL antibody (AA 1-242)

### 2 Images

#### Overview

Quantity:	50 µg
Target:	MAP3K7CL
Binding Specificity:	AA 1-242
Reactivity:	Human
Host:	Mouse
Clonality:	Polyclonal
Conjugate:	This MAP3K7CL antibody is un-conjugated
Application:	Western Blotting (WB), Immunofluorescence (IF)

#### Product Details

Purpose:	Mouse polyclonal antibody raised against a full-length human C21orf7 protein.
Immunogen:	C21orf7 (NP_064537.1, 1 a.a. ~ 242 a.a) full-length human protein.
Sequence:	MVQLIAPLEV MWNEAADLKP LALSRRECS GGIMAHYSPD LLGPEMESRY FAQVGLEHLA SSSPPAFGFL KCLDYSISVL CSATSLAMLE DNPKVSKLAT GDWMLTLKPK SITVPVEIPS SPLDDTPPED SIPLVFPELD QQLQPLPPCH DSEESMEVFK QHCQIAEEYH EVKKEITLLE QRKKELIAKL DQAEKEKVDA AELVREFEAL TEENRTLRLA QSQCVEQLEK LRIQYQKRQG SS
Cross-Reactivity:	Human
Characteristics:	Antibody reactive against mammalian transfected lysate.

#### Target Details

Target:	MAP3K7CL
---------	----------

## Target Details

Alternative Name:	C21orf7 ( <a href="#">MAP3K7CL Products</a> )
Background:	Full Gene Name: chromosome 21 open reading frame 7 Synonyms: HC21ORF7,TAK1L,TAKL,TAKL-1,TAKL-2,TAKL-4
Gene ID:	56911
NCBI Accession:	<a href="#">NM_020152</a>

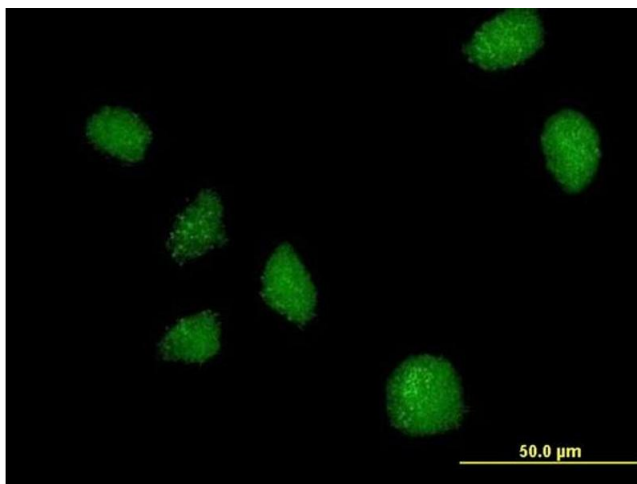
## Application Details

Application Notes:	Optimal working dilution should be determined by the investigator.
Restrictions:	For Research Use only

## Handling

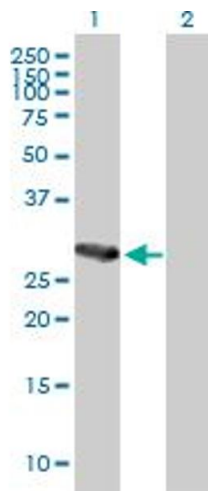
Buffer:	In 1x PBS, pH 7.4
Handling Advice:	Aliquot to avoid repeated freezing and thawing.
Storage:	-20 °C
Storage Comment:	Store at -20°C or lower. Aliquot to avoid repeated freezing and thawing.

## Images



### Immunofluorescence

**Image 1.** Immunofluorescence of purified MaxPab antibody to C21orf7 on HeLa cell. [antibody concentration 10 ug/ml]



### Western Blotting

**Image 2.** Western Blot analysis of C21orf7 expression in transfected 293T cell line by C21orf7 MaxPab polyclonal antibody.

Lane 1: C21orf7 transfected lysate(26.62 KDa).

Lane 2: Non-transfected lysate.