

Datasheet for ABIN528106
anti-CD248 antibody (AA 1-757)



[Go to Product page](#)

1 Image

Overview

Quantity:	50 µg
Target:	CD248
Binding Specificity:	AA 1-757
Reactivity:	Human
Host:	Mouse
Clonality:	Polyclonal
Conjugate:	This CD248 antibody is un-conjugated
Application:	Western Blotting (WB)

Product Details

Purpose:	Mouse polyclonal antibody raised against a full-length human CD248 protein.
Immunogen:	CD248 (AAI04485.1, 1 a.a. ~ 757 a.a) full-length human protein.
Sequence:	<p>MLLRLLLAWA AAGPTLGQDP WAAEPRAACG PSSCYALFPR RRTFLEAWRA CRELGGDLAT PRTPEEAQRV DSLVGAGPAS RLLWIGLQRQ ARQCQLQRPL RGFTWTTGDQ DTAFTNWAQP ASGGPCPAQR CVALEASGEH RWLEGSCTLA VDGYLQCFGF EGACPALQDE AGQAGPAVYT TPFHLVSTEF EWLPGFSVAA VQCQAGRGAS LLCVKQPEGG VGWSRAGPLC LGTGCSPDNG GCEHECVVEEV DGHVSCRCTE GFRLAADGRS CEDPCAQAPC EQQCEPGGPQ GYSCHCRLGF RPAEDDPHRC VDTDECQIAG VCQQMCVNYV GGFECYCSEG HELEADGISC SPAGAMGAQA SQDLGDELDD DGEDEEDEDE AWKAFNGGWT EMPGILWMEP TQPPDFALAY RPSFPEDREP QIPYPEPTWP PPLSAPRPY HSSVLSVTRP VVVSATRPTL PSAHQPPVIP ATHPALSRDH QIPVIAANYP DLPSAYQPGI LSVSHSAQPP AHQPPMISTK YPELFFAHQS PMFPDTRVAG TQTTTHLPGI PPNHAPLVTT LGAQLPPQAP DALVLRQTAT QLPPIPTAQP SLTTTTSRSPV</p>

Product Details

SPAHQISVPA ATQPAALPTL LPSQSPTNQT SPISPTHPHS KAPQIPREDG PSPKLALWLP
SPAPTAAPTA LGEAGLAEHS QRDDRWLLVA LLVPTCVFLV VLLALGIVYC TRCGPHAPNK
RITDCYRWVI HAGSKSPTEP MPPRGSLTGV QTCRTSV

Cross-Reactivity: Human

Characteristics: Antibody reactive against mammalian transfected lysate.

Target Details

Target: CD248

Alternative Name: CD248 ([CD248 Products](#))

Background: Full Gene Name: CD248 Molecule, endosialin
Synonyms: CD164L1,MGC119478,MGC119479,TEM1

Gene ID: 57124

Application Details

Application Notes: Optimal working dilution should be determined by the investigator.

Restrictions: For Research Use only

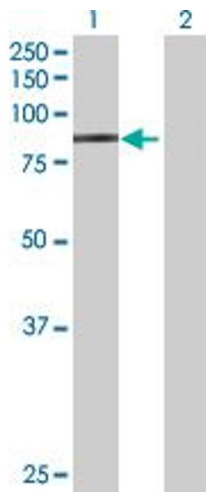
Handling

Buffer: In 1x PBS, pH 7.4

Handling Advice: Aliquot to avoid repeated freezing and thawing.

Storage: -20 °C

Storage Comment: Store at -20°C or lower. Aliquot to avoid repeated freezing and thawing.



Western Blotting

Image 1. Western Blot analysis of CD248 expression in transfected 293T cell line by CD248 MaxPab polyclonal antibody.

Lane 1: CD248 transfected lysate(83.27 KDa).

Lane 2: Non-transfected lysate.