

Datasheet for ABIN528124
anti-SLURP1 antibody (AA 1-103)[Go to Product page](#)

1 Image

Overview

Quantity:	100 µg
Target:	SLURP1
Binding Specificity:	AA 1-103
Reactivity:	Human
Host:	Rabbit
Clonality:	Polyclonal
Conjugate:	This SLURP1 antibody is un-conjugated
Application:	Western Blotting (WB)

Product Details

Purpose:	Rabbit polyclonal antibody raised against a full-length human SLURP1 protein.
Immunogen:	SLURP1 (NP_065160.1, 1 a.a. ~ 103 a.a) full-length human protein.
Sequence:	MASRWAVQLL LVAAWSMGCG EALKCYTCKE PMTSASCRTI TRCKPEDTAC MTTLVTVEAE YPFNQSPVVT RSCSSSCVAT DPDSIGAAHL IFCCFRDLCN SEL
Cross-Reactivity:	Human
Characteristics:	Antibody reactive against mammalian transfected lysate.

Target Details

Target:	SLURP1
Alternative Name:	SLURP1 (SLURP1 Products)

Target Details

Background:	Full Gene Name: secreted LY6/PLAUR domain containing 1 Synonyms: ANUP,ARS,ArsB,LY6LS,MDM
Gene ID:	57152
NCBI Accession:	NM_020427

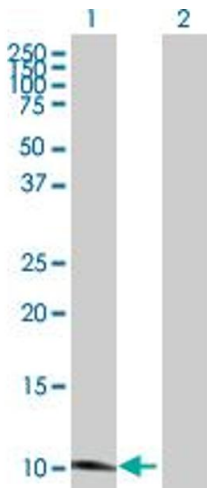
Application Details

Application Notes:	Optimal working dilution should be determined by the investigator.
Restrictions:	For Research Use only

Handling

Buffer:	In 1x PBS, pH 7.4
Handling Advice:	Aliquot to avoid repeated freezing and thawing.
Storage:	-20 °C
Storage Comment:	Store at -20°C or lower. Aliquot to avoid repeated freezing and thawing.

Images



Western Blotting

Image 1. Western Blot analysis of SLURP1 expression in transfected 293T cell line by SLURP1 MaxPab polyclonal antibody.

Lane 1: SLURP1 transfected lysate(11.20 kDa).

Lane 2: Non-transfected lysate.