



[Go to Product page](#)

Datasheet for ABIN528135

anti-SLC39A10 antibody (AA 514-621)

1 Image

Overview

Quantity:	50 µL
Target:	SLC39A10
Binding Specificity:	AA 514-621
Reactivity:	Human
Host:	Mouse
Clonality:	Polyclonal
Conjugate:	This SLC39A10 antibody is un-conjugated
Application:	Western Blotting (WB), ELISA

Product Details

Purpose:	Mouse polyclonal antibody raised against a partial recombinant SLC39A10.
Immunogen:	SLC39A10 (NP_065075, 514 a.a. ~ 621 a.a) partial recombinant protein with GST tag.
Sequence:	CIRMFKHYKQ QRGKQKWFMK QNTEESTIGR KLSDHKLNNT PDSDWLQLKP LAGTDDSVVS EDRLNETELT DLEGQQESPP KNYLCIEEEK IIDHSHSDGL HTIHEHDL
Cross-Reactivity:	Human
Characteristics:	Antibody Reactive Against Recombinant Protein.

Target Details

Target:	SLC39A10
Alternative Name:	SLC39A10 (SLC39A10 Products)

Target Details

Background:	Full Gene Name: solute carrier family 39 (zinc transporter), member 10 Synonyms: DKFZp781L10106,LZT-Hs2,MGC126565,MGC138428
Gene ID:	57181
NCBI Accession:	NM_020342

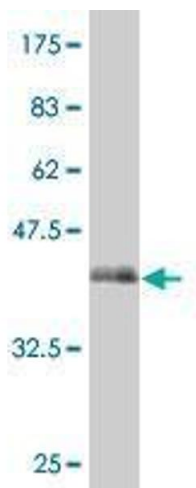
Application Details

Application Notes:	Optimal working dilution should be determined by the investigator.
Restrictions:	For Research Use only

Handling

Format:	Liquid
Buffer:	50 % glycerol
Handling Advice:	Aliquot to avoid repeated freezing and thawing.
Storage:	-20 °C
Storage Comment:	Store at -20°C or lower. Aliquot to avoid repeated freezing and thawing.

Images



Western Blotting

Image 1. Western Blot detection against Immunogen (37.99 KDa) .