



Datasheet for ABIN528145  
**anti-KIR2DL5A antibody (AA 1-375)**



[Go to Product page](#)

1 Image

Overview

Quantity:	100 µg
Target:	KIR2DL5A
Binding Specificity:	AA 1-375
Reactivity:	Human
Host:	Rabbit
Clonality:	Polyclonal
Conjugate:	This KIR2DL5A antibody is un-conjugated
Application:	Western Blotting (WB)

Product Details

Purpose:	Rabbit polyclonal antibody raised against a full-length human KIR2DL5A protein.
Immunogen:	KIR2DL5A (AAI60063.1, 1 a.a. ~ 375 a.a) full-length human protein.
Sequence:	MSLMVISMAL VGFLLQAW THEGGQDKPL LSAWPSAVVP RGGHVTLLCR SRLGFTIFSL YKEDGVPVPE LYNKIFWKS LMGVPTPAHA GTYRCRGSHP RSPIEWSAPS NPLVIVVTGL FGKPSLSAQ PPTVRTGENV TLSCSSRSSF DMYHLSREGR AHEPRLPAVP SVNGTFQADF PLGPATHGGT YTCFGLHDS PYEWSDPSPD LLVSVTGNS SSSSPTEPS SKTGIRRHLLH ILIGTSVAII LFIILFFLL HCCSNKKNA AVMDQEPAGD RTVNREDSDD QDPQEVTYAQ LDHCVFTQTK ITSPSQRPKT PPTDTTMYME LPNAKPRSL PAHKHHSQAL RGSSRETTAL SQNRVASSHV PAAGI
Cross-Reactivity:	Human
Characteristics:	Antibody reactive against mammalian transfected lysate.

## Target Details

Target:	KIR2DL5A
Alternative Name:	KIR2DL5A ( <a href="#">KIR2DL5A Products</a> )
Background:	Full Gene Name: killer cell immunoglobulin-like receptor, two domains, long cytoplasmic tail, 5A Synonyms: CD158F,KIR2DL5,KIR2DL5.1,KIR2DL5.3
Gene ID:	57292

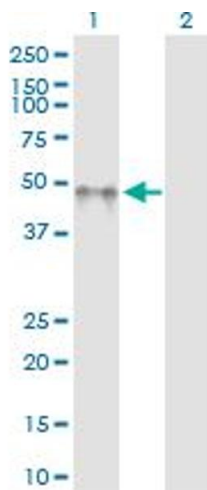
## Application Details

Application Notes:	Optimal working dilution should be determined by the investigator.
Restrictions:	For Research Use only

## Handling

Buffer:	In 1x PBS, pH 7.4
Handling Advice:	Aliquot to avoid repeated freezing and thawing.
Storage:	-20 °C
Storage Comment:	Store at -20°C or lower. Aliquot to avoid repeated freezing and thawing.

## Images



### Western Blotting

**Image 1.** Western Blot analysis of KIR2DL5A expression in transfected 293T cell line by KIR2DL5A MaxPab polyclonal antibody.

Lane 1: KIR2DL5A transfected lysate(41.25 KDa).

Lane 2: Non-transfected lysate.