



[Go to Product page](#)

Datasheet for ABIN528182
anti-GATAD2B antibody (AA 1-593)

1 Image

Overview

Quantity:	100 µg
Target:	GATAD2B
Binding Specificity:	AA 1-593
Reactivity:	Human
Host:	Rabbit
Clonality:	Polyclonal
Conjugate:	This GATAD2B antibody is un-conjugated
Application:	Western Blotting (WB)

Product Details

Purpose:	Rabbit polyclonal antibody raised against a full-length human GATAD2B protein.
Immunogen:	GATAD2B (NP_065750.1, 1 a.a. ~ 593 a.a) full-length human protein.
Sequence:	MDRMTEDALR LNLKRS LDP ADERDDVLAK RLKMEGHEAM ERLKMLALLK RKDLANLEVP HELPTKQDGS GVKGYEEKLN GNLRPHGDNR TAGRPGKENI NDEPVDMSAR RSEPERGRLT PSPDIIVLSD NEASSPRSSS RMEERLKAAN LEMFKGKGIE ERQQLIKQLR DELRLEEALR VLLKKLRQSQ LQKENVVQKT PVVQNAASIV QPSPAHVGQQ GLSKLPSRPG AQQVEPQNLN TLQGHSVIRS ATNTTLP HML MSQRVIAPNP AQLQGQRGPP KPGLVRTTTP NMNPAINYQP QSSSSVPCQR TTSSAIYMNL ASHIQPGTVN RVSSPLSPS AMTDAANSQA AAKLALRKQL EKTLLIIPPP KPPAPLLHFL PSAANSEFIY MVGLEEVVQS VIDSQKSCA SLLRVEPFVC AQCRDFTPH WKQEKNGKIL CEQCMTSNQK KALKAEHTNR LKNAFVKALQ QEQEIEQRLQ QQAALSPTTA PAVSSVSKQE TIMRHHTLRQ APQPQSSLQR GIPTSARSML SNFAQAPQLS VPGGLLGMPG VNIAYLNTGI GGHKGPSLAD RQREYLLDMI PPRSISQSIS GQK

Product Details

Cross-Reactivity:	Human
Characteristics:	Antibody reactive against mammalian transfected lysate.

Target Details

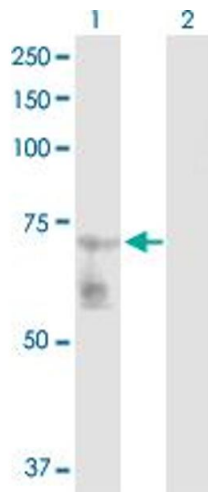
Target:	GATAD2B
Alternative Name:	GATAD2B (GATAD2B Products)
Background:	Full Gene Name: GATA zinc finger domain containing 2B Synonyms: FLJ37346,KIAA1150,MGC138257,MGC138285,P66beta,RP11-216N14.6
Gene ID:	57459
NCBI Accession:	NM_020699

Application Details

Application Notes:	Optimal working dilution should be determined by the investigator.
Restrictions:	For Research Use only

Handling

Buffer:	In 1x PBS, pH 7.4
Handling Advice:	Aliquot to avoid repeated freezing and thawing.
Storage:	-20 °C
Storage Comment:	Store at -20°C or lower. Aliquot to avoid repeated freezing and thawing.



Western Blotting

Image 1. Western Blot analysis of GATAD2B expression in transfected 293T cell line by GATAD2B MaxPab polyclonal antibody.

Lane 1: GATAD2B transfected lysate(65.30 KDa).

Lane 2: Non-transfected lysate.