



[Go to Product page](#)

Datasheet for ABIN528201

anti-MTA3 antibody (AA 416-515)

1 Image

Overview

Quantity:	100 µg
Target:	MTA3
Binding Specificity:	AA 416-515
Reactivity:	Human
Host:	Mouse
Clonality:	Monoclonal
Conjugate:	This MTA3 antibody is un-conjugated
Application:	ELISA, Immunofluorescence (IF)

Product Details

Purpose:	Mouse monoclonal antibody raised against a partial recombinant MTA3.
Immunogen:	MTA3 (NP_065795, 416 a.a. ~ 515 a.a) partial recombinant protein with GST tag. MW of the GST tag alone is 26 KDa.
Sequence:	LKMPTQSEEE KLSPSPPTED PRVRSHVSRQ AMQGMPVRNT GSPKSAVKTR QAFFLHTTYF TKFARQVCKN TLRLRQAARR PFVAINYAAI RAECKMLLNS
Clone:	3B3
Isotype:	IgG2b
Cross-Reactivity:	Human
Characteristics:	Antibody Reactive Against Recombinant Protein.

Target Details

Target:	MTA3
Alternative Name:	MTA3 (MTA3 Products)
Background:	Full Gene Name: metastasis associated 1 family, member 3 Synonyms: KIAA1266
Gene ID:	57504
NCBI Accession:	NM_020744
Pathways:	Chromatin Binding

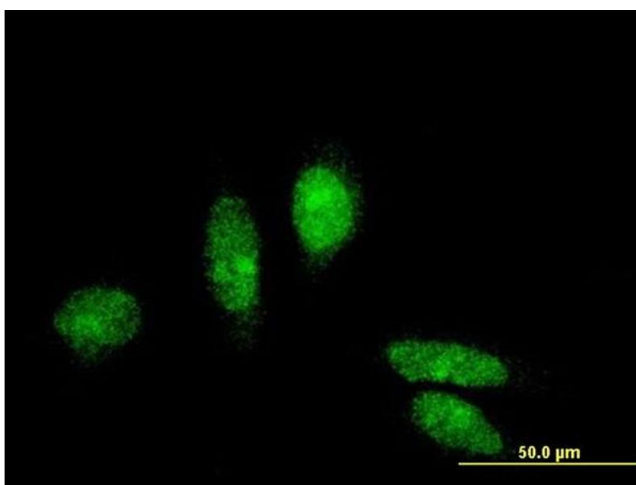
Application Details

Application Notes:	Optimal working dilution should be determined by the investigator.
Restrictions:	For Research Use only

Handling

Buffer:	In 1x PBS, pH 7.4
Handling Advice:	Aliquot to avoid repeated freezing and thawing.
Storage:	-20 °C
Storage Comment:	Store at -20°C or lower. Aliquot to avoid repeated freezing and thawing.

Images



Immunofluorescence

Image 1. Immunofluorescence of monoclonal antibody to MTA3 on HeLa cell. [antibody concentration 10 ug/ml]