

Datasheet for ABIN528219
anti-SORCS2 antibody (AA 802-900)



[Go to Product page](#)

2 Images

Overview

Quantity:	100 µg
Target:	SORCS2
Binding Specificity:	AA 802-900
Reactivity:	Human
Host:	Mouse
Clonality:	Monoclonal
Conjugate:	This SORCS2 antibody is un-conjugated
Application:	ELISA, Western Blotting (WB)

Product Details

Purpose:	Mouse monoclonal antibody raised against a partial recombinant SORCS2.
Immunogen:	SORCS2 (NP_065828.1, 802 a.a. ~ 900 a.a) partial recombinant protein with GST tag. MW of the GST tag alone is 26 KDa.
Sequence:	VLRVLDQFQV MPLQFSKELD AYNPNTPEWR EDVGLVVTRL LSKETSVPQE LLVTVVKPGL PTLADLYVLL PPPRPTRKRS LSSDKRLAAI QQVLNAQKI
Clone:	1D7
Isotype:	IgG2a
Cross-Reactivity:	Human
Characteristics:	Antibody Reactive Against Recombinant Protein.

Target Details

Target:	SORCS2
Alternative Name:	SORCS2 (SORCS2 Products)
Background:	Full Gene Name: sortilin-related VPS10 domain containing receptor 2 Synonyms:
Gene ID:	57537
NCBI Accession:	NM_020777

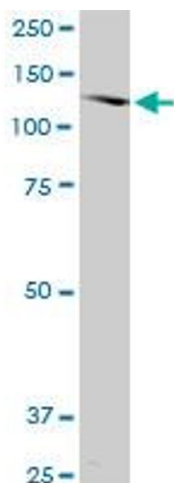
Application Details

Application Notes:	Optimal working dilution should be determined by the investigator.
Restrictions:	For Research Use only

Handling

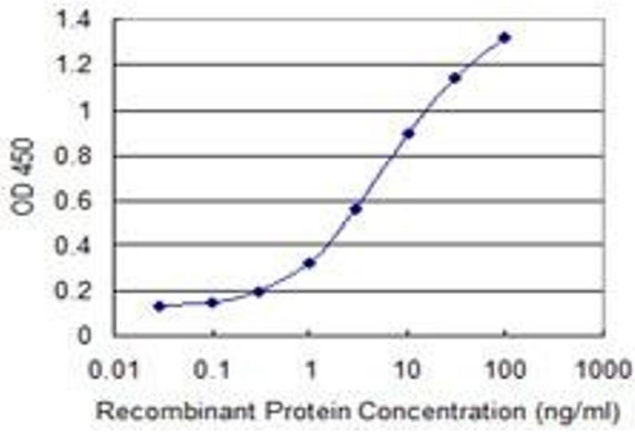
Buffer:	In 1x PBS, pH 7.4
Handling Advice:	Aliquot to avoid repeated freezing and thawing.
Storage:	-20 °C
Storage Comment:	Store at -20°C or lower. Aliquot to avoid repeated freezing and thawing.

Images



Western Blotting

Image 1. SORCS2 monoclonal antibody (M03), clone 1D7.
Western Blot analysis of SORCS2 expression in HepG2.



ELISA

Image 2. Detection limit for recombinant GST tagged SORCS2 is 0.1 ng/ml as a capture antibody.