



[Go to Product page](#)

Datasheet for ABIN528222
anti-PDP2 antibody (AA 1-529)

1 Image

Overview

Quantity:	50 µg
Target:	PDP2
Binding Specificity:	AA 1-529
Reactivity:	Human
Host:	Mouse
Clonality:	Polyclonal
Conjugate:	This PDP2 antibody is un-conjugated
Application:	Western Blotting (WB)

Product Details

Purpose:	Mouse polyclonal antibody raised against a full-length human PDP2 protein.
Immunogen:	PDP2 (NP_065837.1, 1 a.a. ~ 529 a.a) full-length human protein.
Sequence:	MSSTVSYWIL NSTRNSIATL QGGRRLYSRY VSNRNKCLKWR LFSRVPPTLN SSPCGGFTLC KAYRHTSTEE DDFHLQLSPE QINEVLRAGE TTHKILDLES RVPNSVLRFE SNQLAANSPV EDRRGVASCL QTNGLMFGIF DGHGGHACAQ AVSERLFYYV AVSLMSHQTL EHEGAMESM KPLLPIHLWL KHPGDSIYKD VTSVHLDHLR VYWQELLDLH MEMGLSIEEA LMYSFQRLDS DISLEIQAPL EDEVTRNLSL QVAFSGATAC MAHVDGIHLH VANAGDCRAI LGVQEDNGMW SCLPLTRDHN AWNQAELSRL KREHPESEDR TIIMEDRLLG VLIPCRAFGD VQLKWSKELQ RSILERGFNT EALNIYQFTP PHYYPYLYT AEPEVTYHRL RPQDKFLVLA SDGLWDMLSN EDVRLVVGH LAEADWHKTD LAQRPANLGL MQSLLLQRKA SGLHEADQNA ATRLIRHAIG NNEYGEMAE RLAAMLTLPE DLARMYRDDI TVTVVYFNSE SIGAYYKGG

Product Details

Cross-Reactivity:	Human
Characteristics:	Antibody reactive against mammalian transfected lysate.

Target Details

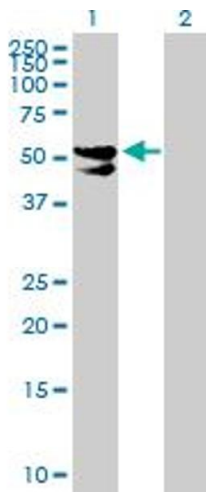
Target:	PDP2
Alternative Name:	PDP2 (PDP2 Products)
Background:	Full Gene Name: pyruvate dehydrogenase phosphatase isoenzyme 2 Synonyms: KIAA1348
Gene ID:	57546
NCBI Accession:	NM_020786

Application Details

Application Notes:	Optimal working dilution should be determined by the investigator.
Restrictions:	For Research Use only

Handling

Buffer:	In 1x PBS, pH 7.4
Handling Advice:	Aliquot to avoid repeated freezing and thawing.
Storage:	-20 °C
Storage Comment:	Store at -20°C or lower. Aliquot to avoid repeated freezing and thawing.



Western Blotting

Image 1. Western Blot analysis of PDP2 expression in transfected 293T cell line by PDP2 MaxPab polyclonal antibody.

Lane 1: PDP2 transfected lysate(58.19 KDa).

Lane 2: Non-transfected lysate.