



Datasheet for ABIN528244
anti-FAM234B antibody (AA 1-622)



[Go to Product page](#)

1 Image

Overview

Quantity:	50 µg
Target:	FAM234B
Binding Specificity:	AA 1-622
Reactivity:	Human
Host:	Mouse
Clonality:	Polyclonal
Conjugate:	This FAM234B antibody is un-conjugated
Application:	Western Blotting (WB)

Product Details

Purpose:	Mouse polyclonal antibody raised against a full-length human KIAA1467 protein.
Immunogen:	KIAA1467 (NP_065904.1, 1 a.a. ~ 622 a.a) full-length human protein.
Sequence:	MATVLSRALK LPGKKSPDLG EYDPLTQADS DESEDDLVLN LQKNGGVKNG KSPLGEAPEP DSDAEVAEAA KPHLSEVTTE GYPSEPLGGL EQKAASSLVS YVRTSVFLLT LGISMILVLL CAFLIPCPPR DLHSTWSRHL GSQGGDLSP LELADVNGDG LRDVLLSFVM SRNGSAVGVS RPAANLVCLS GMNGSTLWSS LLPPEARLIT CLELMPGSLA ETICLVGTGH KMLSFAFNATS GKAIWTLNPN YLSNGTLAAP VVLPDLDED GVRDLVLA I GELQPDLCFL LVSGRTGNPV GRPVKYNIVG VGNLIGPQVY ITTNGAVYIL FGFGNIQAVA LRDIFVQAQN RDSSPPSLQI EEPEWEKRRS INLSELIDVY SDGVELLQMV KAPDSNCSNL LITTRQSLVL LRGQNLTPYW ALRLQGLRSQ PTPGYFTDDQ TLDLFLLIQD GVGMMKMMVV DGDSGSIVWS YRAPCHMKET PATSAVTSQ KSVFLFWAEG LSAASPNSDI ILGTEPPSLH HLYLLHPAFP SILLDLANTT GTVTASEVGI NDLWKDAFYV TRTTGPSSEG HPAALVSKL SLRWALMEGQ MAQLQESTPK

Product Details

IGRGELRRFL SRIKFVEAPY EI

Cross-Reactivity: Human

Characteristics: Antibody reactive against mammalian transfected lysate.

Target Details

Target: FAM234B

Alternative Name: KIAA1467 ([FAM234B Products](#))

Background: Full Gene Name: KIAA1467
Synonyms: DKFZp7810012

Gene ID: 57613

NCBI Accession: [NM_020853](#)

Application Details

Application Notes: Optimal working dilution should be determined by the investigator.

Restrictions: For Research Use only

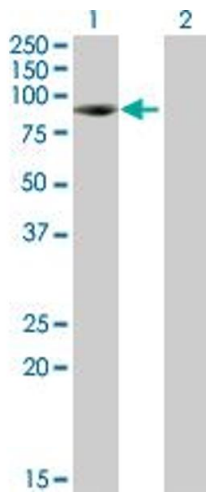
Handling

Buffer: In 1x PBS, pH 7.4

Handling Advice: Aliquot to avoid repeated freezing and thawing.

Storage: -20 °C

Storage Comment: Store at -20°C or lower. Aliquot to avoid repeated freezing and thawing.



Western Blotting

Image 1. Western Blot analysis of KIAA1467 expression in transfected 293T cell line by KIAA1467 MaxPab polyclonal antibody.

Lane 1: KIAA1467 transfected lysate(68.42 KDa).

Lane 2: Non-transfected lysate.