



[Go to Product page](#)

Datasheet for ABIN528273
anti-ZBTB26 antibody (AA 1-441)

3 Images

Overview

Quantity:	50 µg
Target:	ZBTB26
Binding Specificity:	AA 1-441
Reactivity:	Human
Host:	Mouse
Clonality:	Polyclonal
Conjugate:	This ZBTB26 antibody is un-conjugated
Application:	Western Blotting (WB), Immunofluorescence (IF)

Product Details

Purpose:	Mouse polyclonal antibody raised against a full-length human ZBTB26 protein.
Immunogen:	ZBTB26 (NP_065975.1, 1 a.a. ~ 441 a.a) full-length human protein.
Sequence:	MSERSDLLHF KFENYGDSML QKMNKLREEN KFCDVTVLID DIEVQGHKIV FAAGSPFLRD QFLNDSREV KISILQSSEV GRQLLLSCYS GVLEFPPEMEL VNYLTAASFL QMSHIVERCT QALWKFIPK QPMDSKEGCE PQSASPQSKE QQGARGSPK QDSPCIHPSE DSMDMEDSDI QIVKVESIGD VSEVRSKKDQ NQFISSEPTA LHSSEPQHSL INSTVENRVS EIEQNHLHNY ALSYTGSDNI IMASKDVFGP NIRGVDKGLQ WHHQCPCCTR VFRHLENYAN HLKMHKLFMC LLCGKTFTQK GNLHRHMRVH AGIKPFQCKI CGKTFSQKCS LQDHLNLHSG DKPHKCNYCD MVFAHKPVLR KHLKQLHGKN SFDNANERNV QDLTVDFDSF ACTTVTDSKG CQPQPDATQV LDAGKLAQAV LNLNRNDSTCV N
Cross-Reactivity:	Human

Product Details

Characteristics: Antibody reactive against mammalian transfected lysate.

Target Details

Target: ZBTB26

Alternative Name: ZBTB26 ([ZBTB26 Products](#))

Background: Full Gene Name: zinc finger and BTB domain containing 26
Synonyms: KIAA1572,ZNF481,bioref

Gene ID: 57684

NCBI Accession: [NM_020924](#)

Application Details

Application Notes: Optimal working dilution should be determined by the investigator.

Restrictions: For Research Use only

Handling

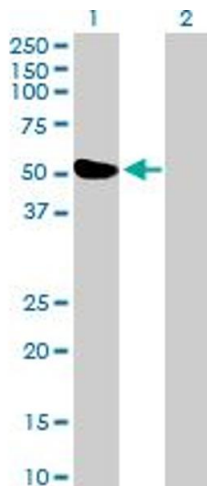
Buffer: In 1x PBS, pH 7.4

Handling Advice: Aliquot to avoid repeated freezing and thawing.

Storage: -20 °C

Storage Comment: Store at -20°C or lower. Aliquot to avoid repeated freezing and thawing.

Images

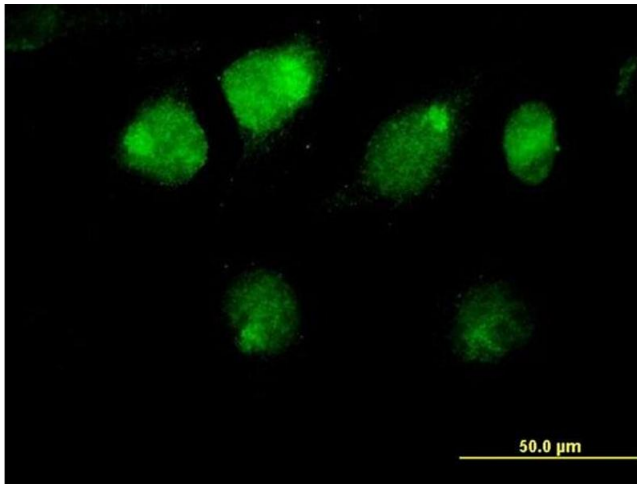


Western Blotting

Image 1. Western Blot analysis of ZBTB26 expression in transfected 293T cell line by ZBTB26 MaxPab polyclonal antibody.

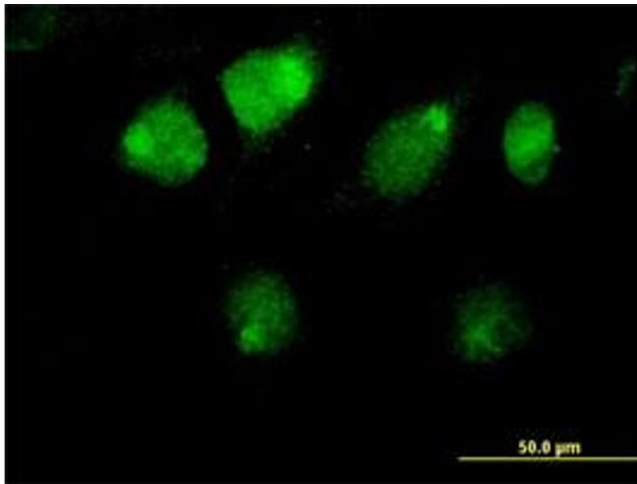
Lane 1: ZBTB26 transfected lysate(48.51 KDa).

Lane 2: Non-transfected lysate.



Immunofluorescence

Image 2. Immunofluorescence of purified MaxPab antibody to ZBTB26 on HeLa cell. [antibody concentration 10 ug/ml]



Immunofluorescence

Image 3. Immunofluorescence of purified MaxPab antibody to ZBTB26 on HeLa cell. (antibody concentration 10 μg/mL)