

Datasheet for ABIN528275  
**anti-LRRC4C antibody (AA 1-640)**



[Go to Product page](#)

1 Image

Overview

Quantity:	50 µL
Target:	LRRC4C
Binding Specificity:	AA 1-640
Reactivity:	Human
Host:	Mouse
Clonality:	Polyclonal
Conjugate:	This LRRC4C antibody is un-conjugated
Application:	Western Blotting (WB)

Product Details

Purpose:	Mouse polyclonal antibody raised against a full-length human LRRC4C protein.
Immunogen:	LRRC4C (NP_065980, 1 a.a. ~ 640 a.a) full-length human protein.
Sequence:	MLNKMTLHPQ QIMIGPRFNR ALFDPLLVLV LALQLLVVAG LVRAQTCPSV CSCSNQFSKV ICVRKNLREV PDGISTNTRL LNLHENQIQI IKVNSFKHLR HLEILQLSRN HIRTIEIGAF NGLANLNTLE LFDNRLTIP NGAFVYLSKL KELWLRNNPI ESIPSYAFNR IPSLRRDLG ELKRLSYISE GAFEGLSNLR YLNLAMCNLR EIPNLTPLIK LDELDSLGNH LSAIRPGSFQ GLMHLQKLWM IQSQQVIER NAFDNLQSLV EINLAHNNLT LLPHDLFTPL HHLERIHLLH NPWNCNCIL WLSWWIKDMA PSNTACCARC NTPPNLKGRY IGELDQNYFT CYAPVIVEPP ADLNVTEGMA AELKCRSTS LTVSWITPN GTVMTHGAYK VRIAVLSDGT LNFTNVTVDQ TGMVTCMVS SVGNNTASAT LNVTAATTP FSYFSTVTV TMEPSQDEAR TTDNNVGPTP VVDWETTNTV TSLTPQSTRS TEKTFITPVT DINSGIPGID EVMKTTKIII GCFVAITLMA AVMLVIFYKM RKQHHRQNH APTRTVEIIN VDDEITGDTP MESHLPMPAI EHEHLNHYS

## Product Details

---

YKSPFNHTTT VNTINSIHSS VHEPLLIRMN SKDNVQETQI

Cross-Reactivity: Human

Characteristics: Antibody reactive against mammalian transfected lysate.

## Target Details

---

Target: LRRC4C

Alternative Name: LRRC4C ([LRRC4C Products](#))

Background: Full Gene Name: leucine rich repeat containing 4C  
Synonyms: KIAA1580,NGL-1,NGL1

Gene ID: 57689

NCBI Accession: [NM\\_020929](#)

Pathways: [Synaptic Membrane](#)

## Application Details

---

Application Notes: Optimal working dilution should be determined by the investigator.

Restrictions: For Research Use only

## Handling

---

Format: Liquid

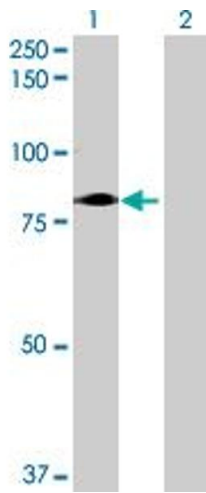
Buffer: No additive

Preservative: Without preservative

Handling Advice: Aliquot to avoid repeated freezing and thawing.

Storage: -20 °C

Storage Comment: Store at -20°C or lower. Aliquot to avoid repeated freezing and thawing.



### Western Blotting

**Image 1.** Western Blot analysis of LRRC4C expression in transfected 293T cell line by LRRC4C MaxPab polyclonal antibody.

Lane 1: LRRC4C transfected lysate(70.4 KDa).

Lane 2: Non-transfected lysate.