



Datasheet for ABIN528299
anti-IGDCC4 antibody (AA 1152-1250)



[Go to Product page](#)

2 Images

Overview

Quantity:	100 µg
Target:	IGDCC4
Binding Specificity:	AA 1152-1250
Reactivity:	Human
Host:	Mouse
Clonality:	Monoclonal
Conjugate:	This IGDCC4 antibody is un-conjugated
Application:	ELISA, Western Blotting (WB), Immunofluorescence (IF)

Product Details

Purpose:	Mouse monoclonal antibody raised against a partial recombinant IGDCC4.
Immunogen:	IGDCC4 (NP_066013, 1152 a.a. ~ 1250 a.a) partial recombinant protein with GST tag. MW of the GST tag alone is 26 KDa.
Sequence:	DLEPEDPLPP EAPDLISGVG DPGQGAAWLD RELGGCELAA PGPDRLTCLP EAASASCSYP DLQPGEVLEE TPGDSCQLKS PCPLGASPGL PRSPVSSSA
Clone:	6A3
Isotype:	IgG2a
Cross-Reactivity:	Human
Characteristics:	Antibody Reactive Against Recombinant Protein.

Target Details

Target:	IGDCC4
Alternative Name:	IGDCC4 (IGDCC4 Products)
Background:	Full Gene Name: immunoglobulin superfamily, DCC subclass, member 4 Synonyms: DDM36,FLJ42051,KIAA1628,NOPE
Gene ID:	57722
NCBI Accession:	NM_020962

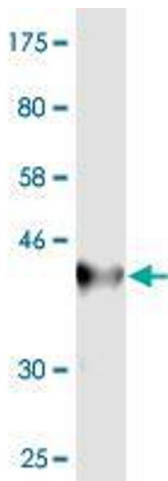
Application Details

Application Notes:	Optimal working dilution should be determined by the investigator.
Restrictions:	For Research Use only

Handling

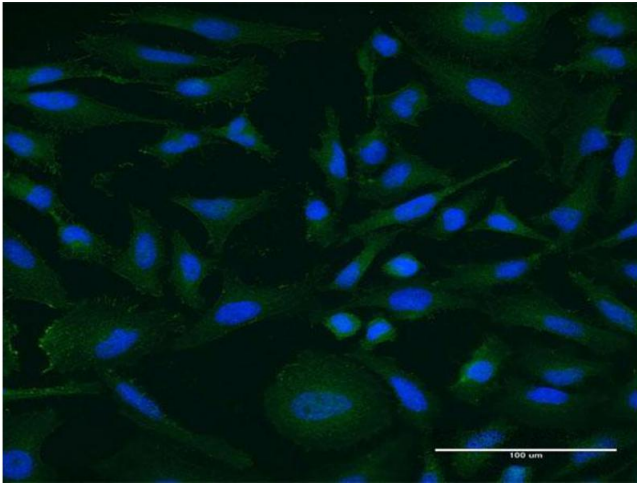
Buffer:	In 1x PBS, pH 7.4
Handling Advice:	Aliquot to avoid repeated freezing and thawing.
Storage:	-20 °C
Storage Comment:	Store at -20°C or lower. Aliquot to avoid repeated freezing and thawing.

Images



Western Blotting

Image 1. Western Blot detection against Immunogen (36.63 KDa) .



Immunofluorescence

Image 2. Immunofluorescence of monoclonal antibody to IGDC4 on HeLa cell. [antibody concentration 10 µg/ml]