



[Go to Product page](#)

Datasheet for ABIN528322
anti-LSM2 antibody (AA 1-95)

2 Images

1 Publication

Overview

| | |
|----------------------|-------------------------------------|
| Quantity: | 50 µL |
| Target: | LSM2 |
| Binding Specificity: | AA 1-95 |
| Reactivity: | Human |
| Host: | Mouse |
| Clonality: | Polyclonal |
| Conjugate: | This LSM2 antibody is un-conjugated |
| Application: | Western Blotting (WB), ELISA |

Product Details

| | |
|-------------------|---|
| Purpose: | Mouse polyclonal antibody raised against a partial recombinant LSM2. |
| Immunogen: | LSM2 (NP_067000, 1 a.a. ~ 95 a.a) partial recombinant protein with GST tag. |
| Sequence: | MLFYFFKSL VGKDVVELK NDLSICGLH SVDQYLNKIL TDISVTDPEK YPHMLSVKNC FIRGSVRYV QLPADVDVTQ LLQDAARKEA LQQKQ |
| Cross-Reactivity: | Human |
| Characteristics: | Antibody Reactive Against Recombinant Protein. |

Target Details

| | |
|-------------------|--|
| Target: | LSM2 |
| Alternative Name: | LSM2 (LSM2 Products) |

Target Details

| | |
|-----------------|---|
| Background: | Full Gene Name: LSM2 homolog, U6 small nuclear RNA associated (<i>S. cerevisiae</i>) Synonyms: C6orf28,G7b,YBL026W,snRNP |
| Gene ID: | 57819 |
| NCBI Accession: | NM_021177 |
| Pathways: | Ribonucleoprotein Complex Subunit Organization |

Application Details

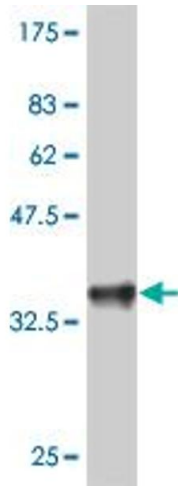
| | |
|--------------------|--|
| Application Notes: | Optimal working dilution should be determined by the investigator. |
| Restrictions: | For Research Use only |

Handling

| | |
|------------------|--|
| Format: | Liquid |
| Buffer: | 50 % glycerol |
| Handling Advice: | Aliquot to avoid repeated freezing and thawing. |
| Storage: | -20 °C |
| Storage Comment: | Store at -20°C or lower. Aliquot to avoid repeated freezing and thawing. |

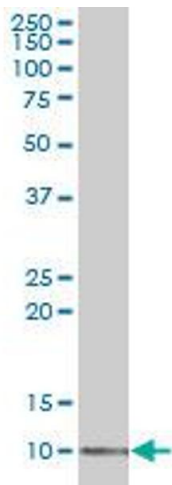
Publications

| | |
|-------------------|---|
| Product cited in: | Lin, Chang, Hsu, Chi, Chien, Liang, Tsai, Lin, Yu: "Low-molecular-mass secretome profiling identifies C-C motif chemokine 5 as a potential plasma biomarker and therapeutic target for nasopharyngeal carcinoma." in: Journal of proteomics , Vol. 94, pp. 186-201, (2013) (PubMed). |
|-------------------|---|



Western Blotting

Image 1. Western Blot detection against Immunogen (36.56 KDa) .



Western Blotting

Image 2. LSM2 polyclonal antibody (A01), Lot # 061130JCS1 Western Blot analysis of LSM2 expression in 293 .