

Datasheet for ABIN528329
anti-SLAMF7 antibody (AA 1-296)



[Go to Product page](#)

2 Images

Overview

Quantity:	100 µg
Target:	SLAMF7
Binding Specificity:	AA 1-296
Reactivity:	Human
Host:	Mouse
Clonality:	Monoclonal
Conjugate:	This SLAMF7 antibody is un-conjugated
Application:	ELISA, Immunofluorescence (IF)

Product Details

Purpose:	Mouse monoclonal antibody raised against a full-length recombinant SLAMF7.
Immunogen:	SLAMF7 (AAH27867, 1 a.a. ~ 296 a.a) full-length recombinant protein with GST tag. MW of the GST tag alone is 26 KDa.
Sequence:	MAGSPTCLTL IYILWQLTGS AASGPVKELV GSVGAVTFP LKSKVKQVDS IVWTFNTTPL VTIQPEGGTI IVTQNRNRER VDFPDGGYSL KLSKLLKKNDS GIYYVGIYSS SLQQPSTQEY VLHVYEHLSK PKVTMGLQSN KNGTCVTNLT CCMEHGEEVD IYTWKALGQA ANESHNGSIL PISWRWGESD MTFICVARNP VSRNFSSPIL ARKLCEGAAD DPDSSMVLLC LPLVPLLLSL FVLGLFLWFL KRERQEENNP KGRSSKYGLL HCGNTEKD GK SPLTAHDARH TKAICL
Clone:	1B9
Isotype:	IgG1
Cross-Reactivity:	Human

Product Details

Characteristics: Antibody Reactive Against Recombinant Protein.

Target Details

Target: SLAMF7

Alternative Name: SLAMF7 ([SLAMF7 Products](#))

Background: Full Gene Name: SLAM family member 7
Synonyms: 19A,CD319,CRACC,CS1

Gene ID: 57823

Application Details

Application Notes: Optimal working dilution should be determined by the investigator.

Restrictions: For Research Use only

Handling

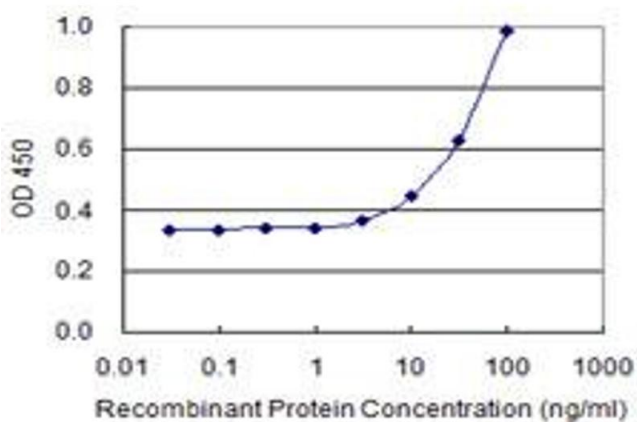
Buffer: In 1x PBS, pH 7.4

Handling Advice: Aliquot to avoid repeated freezing and thawing.

Storage: -20 °C

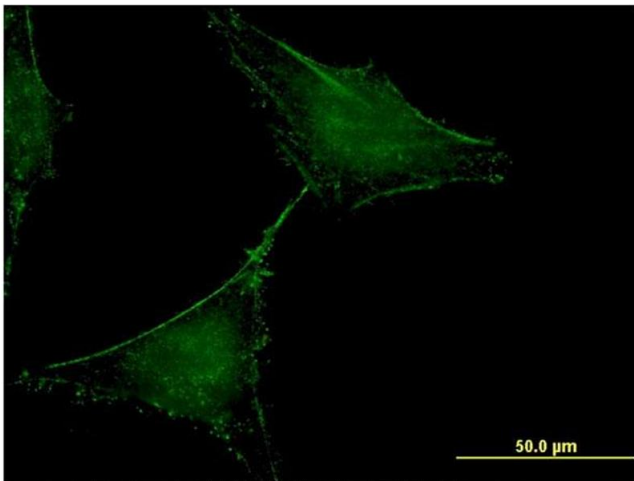
Storage Comment: Store at -20°C or lower. Aliquot to avoid repeated freezing and thawing.

Images



ELISA

Image 1. Detection limit for recombinant GST tagged SLAMF7 is 1 ng/ml as a capture antibody.



Immunofluorescence

Image 2. Immunofluorescence of monoclonal antibody to SLAMF7 on HeLa cell. [antibody concentration 10 ug/ml]