

Datasheet for ABIN528352  
**anti-RPRD1B antibody (AA 1-326)**



[Go to Product page](#)

3 Images

## Overview

Quantity:	100 µg
Target:	RPRD1B
Binding Specificity:	AA 1-326
Reactivity:	Human
Host:	Mouse
Clonality:	Monoclonal
Conjugate:	This RPRD1B antibody is un-conjugated
Application:	Western Blotting (WB), ELISA

## Product Details

Purpose:	Mouse monoclonal antibody raised against a full-length recombinant C20orf77.
Immunogen:	C20orf77 (AAH33629, 1 a.a. ~ 326 a.a) full-length recombinant protein with GST tag. MW of the GST tag alone is 26 KDa.
Sequence:	MSSFESALE KKLSEPSNSQ HSVQTLSSLWL IHHRKHAGPI VSVWHRELK AKSNRKLTFLL YLANDVIQNS KRKGPEFTRE FESVLVDAFS HVAREADEGC KKPLERLLNI WQERSVYGGE FIQLKLSME DSKSPPKAT EEKSLKRTF QQIQEEEDDD YPGSCSPQDP SAGPLLTEEL IKALQDLENA ASGDATVRQK IASLPQEVQD VSLLEKITDK EAAERLPKTV DEACLLLAEY NGRLAAELED RRQLARMLVE YTQNQKDVLS EKEKKLEEYK QKLARVTQVR KELKSHIQSL PDLSELLPNVT GGLAPLPSAG DLFSTD
Clone:	4D6
Isotype:	IgG2a

## Product Details

Cross-Reactivity:	Human
Characteristics:	Antibody Reactive Against Recombinant Protein.

## Target Details

Target:	RPRD1B
Alternative Name:	RPRD1B ( <a href="#">RPRD1B Products</a> )
Background:	Full Gene Name: regulation of nuclear pre-mRNA domain containing 1B Synonyms: C20orf77,CREPT,DKFZp434P0735,FLJ44520,dJ1057B20.2
Gene ID:	58490

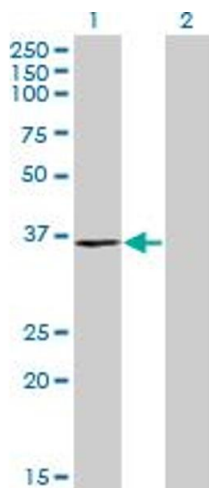
## Application Details

Application Notes:	Optimal working dilution should be determined by the investigator.
Restrictions:	For Research Use only

## Handling

Buffer:	In 1x PBS, pH 7.4
Handling Advice:	Aliquot to avoid repeated freezing and thawing.
Storage:	-20 °C
Storage Comment:	Store at -20°C or lower. Aliquot to avoid repeated freezing and thawing.

## Images

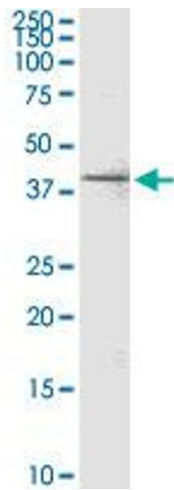


### Western Blotting

**Image 1.** Western Blot analysis of C20orf77 expression in transfected 293T cell line by C20orf77 monoclonal antibody (M04), clone 4D6.

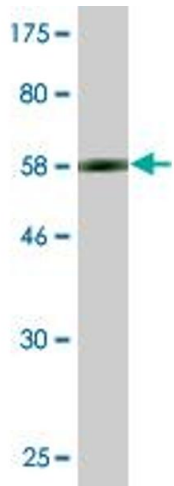
Lane 1: C20orf77 transfected lysate(36.9 kDa).

Lane 2: Non-transfected lysate.



#### Western Blotting

**Image 2.** C20orf77 monoclonal antibody (M04), clone 4D6.  
Western Blot analysis of RPRD1B expression in IMR-32.



#### Western Blotting

**Image 3.** Western Blot detection against Immunogen (61.6  
kDa).