



[Go to Product page](#)

Datasheet for ABIN528381

anti-IL-21 antibody (AA 1-162)

5 Images

Overview

Quantity:	100 µg
Target:	IL-21 (IL21)
Binding Specificity:	AA 1-162
Reactivity:	Human
Host:	Rabbit
Clonality:	Polyclonal
Conjugate:	This IL-21 antibody is un-conjugated
Application:	Western Blotting (WB), Proximity Ligation Assay (PLA)

Product Details

Purpose:	Rabbit polyclonal antibody raised against a full-length human IL21 protein.
Immunogen:	IL21 (NP_068575.1, 1 a.a. ~ 162 a.a) full-length human protein.
Sequence:	MRSSPGNMER IVICLMVIFL GTLVHKSSSQ GQDRHMIRMRL QLIDIVDQLK NYVNDLVPEF LPAPEDVETN CEWSAFSCFQ KAQLKSANTG NNERIINVSII KKLKRKPPST NAGRRQKHRL TCPSCDSYEK KPPKEFLERF KSLQKMIHQ HSSRTHGSE DS
Cross-Reactivity:	Human, Mouse
Characteristics:	Antibody reactive against mammalian transfected lysate.

Target Details

Target:	IL-21 (IL21)
---------	--------------

Target Details

Alternative Name: IL21 ([IL21 Products](#))

Background: Full Gene Name: interleukin 21
Synonyms: IL-21,Za11

Gene ID: 59067

NCBI Accession: [NM_021803](#)

Pathways: [JAK-STAT Signaling](#), [Regulation of Leukocyte Mediated Immunity](#), [Positive Regulation of Immune Effector Process](#), [Production of Molecular Mediator of Immune Response](#)

Application Details

Application Notes: Optimal working dilution should be determined by the investigator.

Restrictions: For Research Use only

Handling

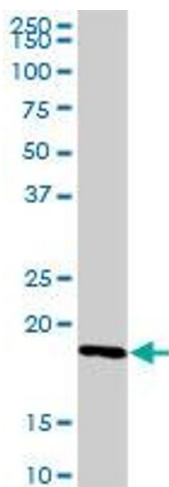
Buffer: In 1x PBS, pH 7.4

Handling Advice: Aliquot to avoid repeated freezing and thawing.

Storage: -20 °C

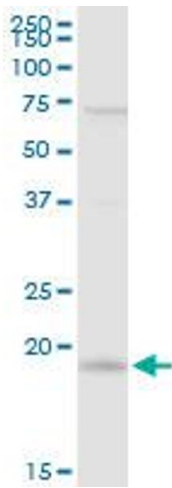
Storage Comment: Store at -20°C or lower. Aliquot to avoid repeated freezing and thawing.

Images



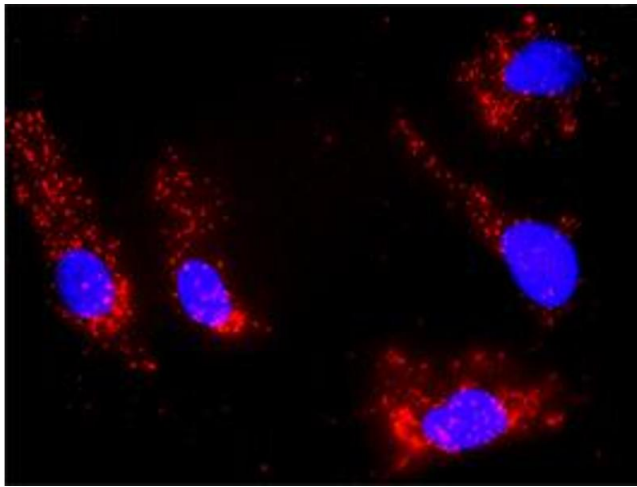
Western Blotting

Image 1. IL21 MaxPab rabbit polyclonal antibody. Western Blot analysis of IL21 expression in mouse kidney.



Western Blotting

Image 2. IL21 MaxPab rabbit polyclonal antibody. Western Blot analysis of IL21 expression in A-431.



Proximity Ligation Assay

Image 3. Proximity Ligation Analysis of protein-protein interactions between IL21 and DGKA. HeLa cells were stained with anti-IL21 rabbit purified polyclonal 1:1200 and anti-DGKA mouse monoclonal antibody 1:50. Each red dot represents the detection of protein-protein interaction complex, and nuclei were counterstained with DAPI (blue).

Please check the [product details page](#) for more images. Overall 5 images are available for ABIN528381.