



[Go to Product page](#)

Datasheet for ABIN528383

anti-CARD18 antibody (AA 1-90)

1 Image

Overview

Quantity:	50 µg
Target:	CARD18
Binding Specificity:	AA 1-90
Reactivity:	Human
Host:	Mouse
Clonality:	Polyclonal
Conjugate:	This CARD18 antibody is un-conjugated
Application:	Western Blotting (WB)

Product Details

Purpose:	Mouse polyclonal antibody raised against a full-length human ICEBERG protein.
Immunogen:	ICEBERG (NP_067546.1, 1 a.a. ~ 90 a.a) full-length human protein.
Sequence:	MADQLLRKKR RIFIHSVAG TINALLDCLL EDEVISQEDM NKVRDENDTV MDKARVLIDL VTGKGPKSCC KFIKHLCEED PQLASKMGLH
Cross-Reactivity:	Human
Characteristics:	Antibody reactive against mammalian transfected lysate.

Target Details

Target:	CARD18
Alternative Name:	CARD18 (CARD18 Products)

Target Details

Background:	Full Gene Name: caspase recruitment domain family, member 18 Synonyms: ICEBERG,UNQ5804,pseudo-ICE
Gene ID:	59082
NCBI Accession:	NM_021571

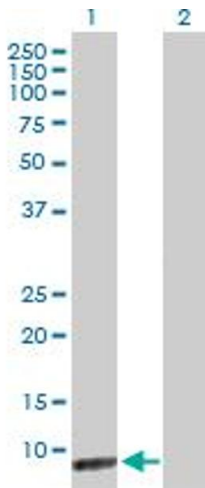
Application Details

Application Notes:	Optimal working dilution should be determined by the investigator.
Restrictions:	For Research Use only

Handling

Buffer:	In 1x PBS, pH 7.4
Handling Advice:	Aliquot to avoid repeated freezing and thawing.
Storage:	-20 °C
Storage Comment:	Store at -20°C or lower. Aliquot to avoid repeated freezing and thawing.

Images



Western Blotting

Image 1. Western Blot analysis of CARD18 expression in transfected 293T cell line by CARD18 MaxPab polyclonal antibody.

Lane 1: ICEBERG transfected lysate(9.9 kDa).

Lane 2: Non-transfected lysate.