

Datasheet for ABIN528430
anti-SAV1 antibody (AA 1-383)[Go to Product page](#)

2 Images

Overview

Quantity:	100 µL
Target:	SAV1
Binding Specificity:	AA 1-383
Reactivity:	Human
Host:	Rabbit
Clonality:	Polyclonal
Conjugate:	This SAV1 antibody is un-conjugated
Application:	Western Blotting (WB), Immunoprecipitation (IP)

Product Details

Purpose:	Rabbit polyclonal antibody raised against a full-length human SAV1 protein.
Immunogen:	SAV1 (NP_068590.1, 1 a.a. ~ 383 a.a) full-length human protein.
Sequence:	MLSRKKTkNE VSKPAEVQgK YVKkETSPLl RNLMPsFIRH GPTIPRRTDI CLPDSSPNAF STSGDVVSRN QSFLRTPiQR TPHEIMRRES NRLSAPSYLA RSLADVPREY GSSQSFVTEV SFAVENGDSG SRYYYSDNFF DGQRKRPLGD RAHEDYRYYE YNHDLFQRMP QNQRHASGI GRVAATSLGN LTNHGSEDLP LPPGWSVDWT MRGRKYIDH NTNTTHWSHP LEREGLPPGW ERVESSEFGT YYVDHTNKA QYRHPCAPSV PRYDQPPPVT YQPQQTERNQ SLLVPANPYH TAEIPDWLQV YARAPVKYDH ILKWELFQLA DLDTYQGMLK LLFMKELEQI VKMYEAYRQA LLTELENRKQ RQQWYAQQHG KNF
Cross-Reactivity:	Human
Characteristics:	Antibody reactive against mammalian transfected lysate.

Target Details

Target:	SAV1
Alternative Name:	SAV1 (SAV1 Products)
Background:	Full Gene Name: salvador homolog 1 (Drosophila) Synonyms: SAV,WW45,WWP4
Gene ID:	60485
NCBI Accession:	NM_021818
Pathways:	Stem Cell Maintenance

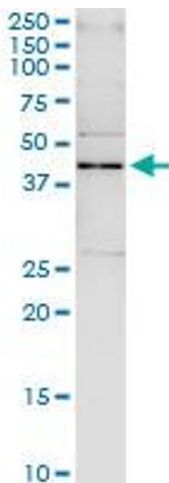
Application Details

Application Notes:	Optimal working dilution should be determined by the investigator.
Restrictions:	For Research Use only

Handling

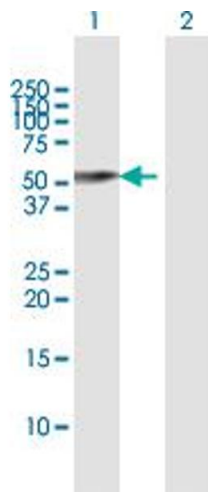
Format:	Liquid
Buffer:	No additive
Preservative:	Without preservative
Handling Advice:	Aliquot to avoid repeated freezing and thawing.
Storage:	-20 °C
Storage Comment:	Store at -20°C or lower. Aliquot to avoid repeated freezing and thawing.

Images



Immunoprecipitation

Image 1. Immunoprecipitation of SAV1 transfected lysate using anti-SAV1 MaxPab rabbit polyclonal antibody and Protein A Magnetic Bead , and immunoblotted with SAV1 purified MaxPab mouse polyclonal antibody (B01P) .



Western Blotting

Image 2. Western Blot analysis of SAV1 expression in transfected 293T cell line by SAV1 MaxPab polyclonal antibody.

Lane 1: SAV1 transfected lysate(44.6 kDa).

Lane 2: Non-transfected lysate.