



[Go to Product page](#)

Datasheet for ABIN528439

anti-APOBEC3G antibody (AA 1-384)

1 Image

Overview

Quantity:	100 µg
Target:	APOBEC3G
Binding Specificity:	AA 1-384
Reactivity:	Human
Host:	Rabbit
Clonality:	Polyclonal
Conjugate:	This APOBEC3G antibody is un-conjugated
Application:	Western Blotting (WB)

Product Details

Purpose:	Rabbit polyclonal antibody raised against a full-length human APOBEC3G protein.
Immunogen:	APOBEC3G (AAH24268.1, 1 a.a. ~ 384 a.a) full-length human protein.
Sequence:	MKPHFRNTVE RMYRDTFSYN FYNRPILSRR NTVWLCYEVK TKGPSRPPLD AKIFRGQVYS ELKYHPEMRF FHWFSKWRKL HRDQEYEV TW YISWSPCTKC TRDMATFLAE DPKVTLTIFV ARLYYFWDPD YQEALRSLCQ KRDGPRATMK IMNYDEFQHC WSKFVYSQRE LFEPWNNLPK YYILLHIMLG EILRHSM DPP TTFNFNNEP WVRGRHETYL CYEVERMHND TWVLLNQRRG FLCNQAPHKH GFLEGRHAEL CFLDVIPFWK LDLDQDYRVT CFTSWSPCFS CAQEMAKFIS KNKHVSLCIF TARIYDDQGR CQEGLRTLAE AGAKISIMTY SEFKHCWDTF VDHQGC PFQP WDGLDEHSQD LSGRLRAILQ NQEN
Cross-Reactivity:	Human
Characteristics:	Antibody reactive against mammalian transfected lysate.

Target Details

Target:	APOBEC3G
Alternative Name:	APOBEC3G (APOBEC3G Products)
Background:	Full Gene Name: apolipoprotein B mRNA editing enzyme, catalytic polypeptide-like 3G Synonyms: ARP9,CEM15,FLJ12740,MDS019,bK150C2.7,dJ494G10.1
Gene ID:	60489
NCBI Accession:	NM_021822

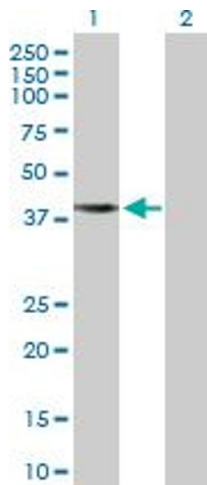
Application Details

Application Notes:	Optimal working dilution should be determined by the investigator.
Restrictions:	For Research Use only

Handling

Buffer:	In 1x PBS, pH 7.4
Handling Advice:	Aliquot to avoid repeated freezing and thawing.
Storage:	-20 °C
Storage Comment:	Store at -20°C or lower. Aliquot to avoid repeated freezing and thawing.

Images



Western Blotting

Image 1. Western Blot analysis of APOBEC3G expression in transfected 293T cell line by APOBEC3G MaxPab polyclonal antibody.

Lane 1: APOBEC3G transfected lysate(46.40 KDa).

Lane 2: Non-transfected lysate.