



[Go to Product page](#)

Datasheet for ABIN528444

anti-NIF3L1 antibody (AA 1-350)

2 Images

Overview

Quantity:	50 µg
Target:	NIF3L1
Binding Specificity:	AA 1-350
Reactivity:	Human
Host:	Mouse
Clonality:	Polyclonal
Conjugate:	This NIF3L1 antibody is un-conjugated
Application:	Western Blotting (WB)

Product Details

Purpose:	Mouse polyclonal antibody raised against a full-length human NIF3L1 protein.
Immunogen:	NIF3L1 (NP_068596.2, 1 a.a. ~ 350 a.a) full-length human protein.
Sequence:	MDLKALLSSL NDFASLSFAE SWDNVGLLVE PSPPHTVNTL FLTNDLTEEV MEEVLQKKAD LILSYHPPIF RPMKRITWNT WKERLVIRAL ENRVGIYSPH TAYDAAPQGV NNWLAKGLGA CTSRPIHPSK APNYPTEGNH RVEFNVNYTQ DLDKVMSAVK GIDGVSVTSF SARTGNEEQT RINLNCTQKA LMQVVDFLSR NKQLYQKTEI LSLEKPLLLH TGMGRLCTLD ESVSLATMID RIKRHLKLSH IRLALGVGRT LESQVKVVAL CAGSGSSVLQ GVEADLYLTG EMSHHTLDA ASQGINVILC EHSNTERGFL SDLRDMLDSH LENKINIILS ETDRDPLQVV
Cross-Reactivity:	Human
Characteristics:	Antibody reactive against mammalian transfected lysate.

Target Details

Target:	NIF3L1
Alternative Name:	NIF3L1 (NIF3L1 Products)
Background:	Full Gene Name: NIF3 NGG1 interacting factor 3-like 1 (S. pombe) Synonyms: ALS2CR1,CALS-7,MDS015
Gene ID:	60491
NCBI Accession:	NM_021824

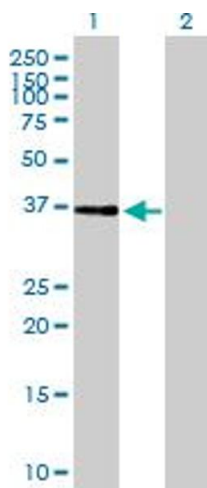
Application Details

Application Notes:	Optimal working dilution should be determined by the investigator.
Restrictions:	For Research Use only

Handling

Buffer:	In 1x PBS, pH 7.4
Handling Advice:	Aliquot to avoid repeated freezing and thawing.
Storage:	-20 °C
Storage Comment:	Store at -20°C or lower. Aliquot to avoid repeated freezing and thawing.

Images

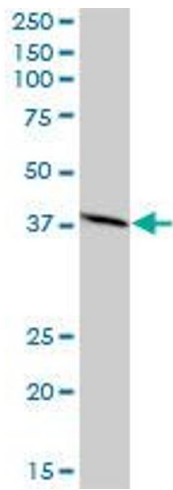


Western Blotting

Image 1. Western Blot analysis of NIF3L1 expression in transfected 293T cell line by NIF3L1 MaxPab polyclonal antibody.

Lane 1: NIF3L1 transfected lysate(38.5 KDa).

Lane 2: Non-transfected lysate.



Western Blotting

Image 2. NIF3L1 MaxPab polyclonal antibody. Western Blot analysis of NIF3L1 expression in human kidney.