



[Go to Product page](#)

Datasheet for ABIN528450

## anti-LDAH/C2orf43 antibody (AA 1-325)

### 1 Image

#### Overview

Quantity:	50 µg
Target:	LDAH/C2orf43 (LDAH)
Binding Specificity:	AA 1-325
Reactivity:	Human
Host:	Mouse
Clonality:	Polyclonal
Conjugate:	This LDAH/C2orf43 antibody is un-conjugated
Application:	Western Blotting (WB)

#### Product Details

Purpose:	Mouse polyclonal antibody raised against a full-length human C2orf43 protein.
Immunogen:	C2orf43 (NP_068744.1, 1 a.a. ~ 325 a.a) full-length human protein.
Sequence:	MDSELKEEIP VHEEFILCGG AETQVLKCGP WTDLFHDQSV KRPKLLIFII PGNPGFSAFY VPFAKALYSL TNRRFPVWTI SHAGHALAPK DKKILTSED SNAQEIKDIY GLNGQIEHKL AFLRTHVPKD MKLVLIGHSI GSYFTLQMLK RVPELPVIRA FLLFPTIERM SESPNGRIAT PLLCWFRYVL YVTGYLLLKP CPETIKSLLI RRGLQVMNLE NEFSPLNILE PFCLANAAYL GGQEMMEVVK RDETIKEHL CKLTFYYGTI DPWCPKEYYE DIKKDFPEGD IRLCEKNIPH AFITHFNQEM ADMIADSLKD DLSKM
Cross-Reactivity:	Human
Characteristics:	Antibody reactive against mammalian transfected lysate.

## Target Details

Target:	LDAH/C2orf43 (LDAH)
Alternative Name:	C2orf43 ( <a href="#">LDAH Products</a> )
Background:	Full Gene Name: chromosome 2 open reading frame 43 Synonyms: FLJ21820
Gene ID:	60526
NCBI Accession:	<a href="#">NM_021925</a>

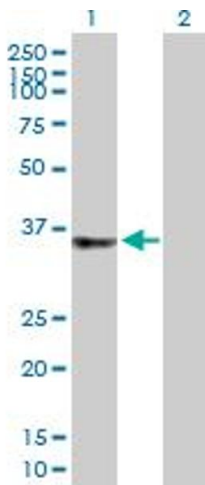
## Application Details

Application Notes:	Optimal working dilution should be determined by the investigator.
Restrictions:	For Research Use only

## Handling

Buffer:	In 1x PBS, pH 7.4
Handling Advice:	Aliquot to avoid repeated freezing and thawing.
Storage:	-20 °C
Storage Comment:	Store at -20°C or lower. Aliquot to avoid repeated freezing and thawing.

## Images



### Western Blotting

**Image 1.** Western Blot analysis of C2orf43 expression in transfected 293T cell line by C2orf43 MaxPab polyclonal antibody.

Lane 1: FLJ21820 transfected lysate(35.75 kDa).

Lane 2: Non-transfected lysate.