



[Go to Product page](#)

Datasheet for ABIN528453
anti-ELAC2 antibody (AA 2-100)

1 Image

Overview

Quantity:	100 µg
Target:	ELAC2
Binding Specificity:	AA 2-100
Reactivity:	Human
Host:	Mouse
Clonality:	Monoclonal
Conjugate:	This ELAC2 antibody is un-conjugated
Application:	ELISA, Immunofluorescence (IF)

Product Details

Purpose:	Mouse monoclonal antibody raised against a partial recombinant ELAC2.
Immunogen:	ELAC2 (NP_060597.3, 2 a.a. ~ 100 a.a) partial recombinant protein with GST tag. MW of the GST tag alone is 26 KDa.
Sequence:	WALCSLLRSA AGRTMSQGRT ISQAPARRER PRKDPLRHLR TREKRGPSGC SGGPNTVYLQ VVAAGSRDSG AALYVFSEFN RYLFNCGEGV QRLMQEHKL
Clone:	1A2
Isotype:	IgG2a
Cross-Reactivity:	Human
Characteristics:	Antibody Reactive Against Recombinant Protein.

Target Details

Target:	ELAC2
Alternative Name:	ELAC2 (ELAC2 Products)
Background:	Full Gene Name: <i>elaC</i> homolog 2 (E. coli) Synonyms: ELC2,FLJ10530,FLJ36693,FLJ42848,HPC2
Gene ID:	60528
NCBI Accession:	NM_018127

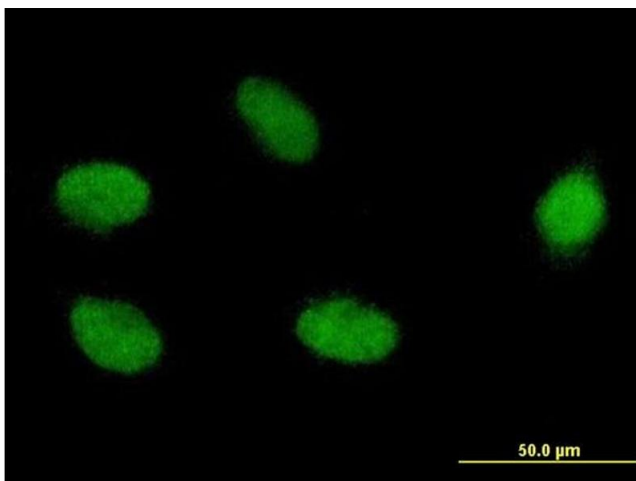
Application Details

Application Notes:	Optimal working dilution should be determined by the investigator.
Restrictions:	For Research Use only

Handling

Buffer:	In 1x PBS, pH 7.4
Handling Advice:	Aliquot to avoid repeated freezing and thawing.
Storage:	-20 °C
Storage Comment:	Store at -20°C or lower. Aliquot to avoid repeated freezing and thawing.

Images



Immunofluorescence

Image 1. Immunofluorescence of monoclonal antibody to ELAC2 on HeLa cell. [antibody concentration 10 ug/ml]