



[Go to Product page](#)

Datasheet for ABIN528479
anti-GPATCH3 antibody (AA 1-525)

1 Image

Overview

Quantity:	50 µL
Target:	GPATCH3
Binding Specificity:	AA 1-525
Reactivity:	Human
Host:	Mouse
Clonality:	Polyclonal
Conjugate:	This GPATCH3 antibody is un-conjugated
Application:	Western Blotting (WB)

Product Details

Purpose:	Mouse polyclonal antibody raised against a full-length human GPATCH3 protein.
Immunogen:	GPATCH3 (AAH07767.1, 1 a.a. ~ 525 a.a) full-length human protein.
Sequence:	MAVPGEAEEE ATVYLVVSGI PSVLRSAHLR SYFSQFREER GGGFLCFHYR HRPERAPPQA APNSALIPTD PAAEQLLSQ TSATDVRPLS TRDSTPIQTR TCCCVISVRG LAQAQLRIRM YSGRRWLDSH GTWLPGRCLI RRLRLPTEAS GLGSFPFKTR KELQSWKAEN EAFTLADLKQ LPELNPPVLM PRGNVGTPLR VFLELIRACR LPPRIITQLQ LQFPKTGSSR RYGNVPFEYE DSETVEQEEL VYTAEGEEIP QGTYLADIPA SPCGEPEEEV GKEEEEEESH S DEDDDRGE EW ERHEALHEDV TGQERTTEQL FEEIEELKWE KGGSGLVFYT DAQFWQEEEG DFDEQTADDW DVDMSVYYDR DGGDKDARDS VQMRLEQLR DGQEDGSVIE RQVGTFERHT KGIGRKVMER QGWAEGQGLG CRCSGVPEAL DSDGQHPRCK RGLGYHGEKL QPFGQLKRPR RNGLGLISTI YDEPLPQDQT ELLRRQPPT SMKFRTDMAF VRGSSCASDS PSLPD

Product Details

Cross-Reactivity:	Human
Characteristics:	Antibody reactive against mammalian transfected lysate.

Target Details

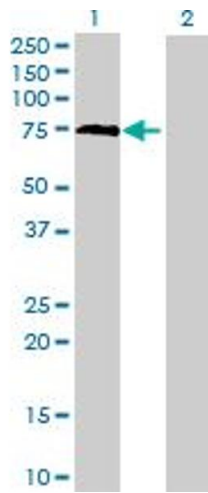
Target:	GPATCH3
Alternative Name:	GPATCH3 (GPATCH3 Products)
Background:	Full Gene Name: G patch domain containing 3 Synonyms: DKFZp686E0221,FLJ12455,GPATC3
Gene ID:	63906

Application Details

Application Notes:	Optimal working dilution should be determined by the investigator.
Restrictions:	For Research Use only

Handling

Format:	Liquid
Buffer:	No additive
Preservative:	Without preservative
Handling Advice:	Aliquot to avoid repeated freezing and thawing.
Storage:	-20 °C
Storage Comment:	Store at -20°C or lower. Aliquot to avoid repeated freezing and thawing.



Western Blotting

Image 1. Western Blot analysis of GPATCH3 expression in transfected 293T cell line by GPATCH3 MaxPab polyclonal antibody.

Lane 1: GPATCH3 transfected lysate(57.75 KDa).

Lane 2: Non-transfected lysate.