

Datasheet for ABIN528490
anti-GPSM3 antibody (AA 1-160)



[Go to Product page](#)

3 Images

Overview

Quantity:	100 µg
Target:	GPSM3
Binding Specificity:	AA 1-160
Reactivity:	Human
Host:	Mouse
Clonality:	Monoclonal
Conjugate:	This GPSM3 antibody is un-conjugated
Application:	ELISA, Western Blotting (WB)

Product Details

Purpose:	Mouse monoclonal antibody raised against a full-length recombinant GPSM3.
Immunogen:	GPSM3 (AAH18724, 1 a.a. ~ 160 a.a) full-length recombinant protein with GST tag. MW of the GST tag alone is 26 KDa.
Sequence:	MEAERPQEEE DGEQGPPQDE EGWPPPNSTT RPWRSAPPSP PPPGTRHTAL GPRSASLLSL QTELLLDLVA EAQSRRLEEQ RATFYTPQNP SSLAPAPLRP LEDREQLYST ILSHCQRME AQRSEPPLPP GGQELLELLL RVQGGGRMEE QRSRPPTHTC
Clone:	1F11
Isotype:	IgG2a
Cross-Reactivity:	Human
Characteristics:	Antibody Reactive Against Recombinant Protein.

Target Details

Target:	GPSM3
Alternative Name:	GPSM3 (GPSM3 Products)
Background:	Full Gene Name: G-protein signaling modulator 3 (AGS3-like, <i>C. elegans</i>) Synonyms: C6orf9,G18,G18.1a,G18.1b,G18.2,NG1
Gene ID:	63940

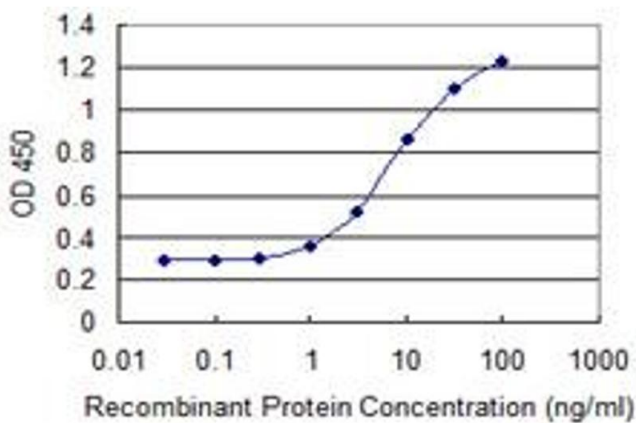
Application Details

Application Notes:	Optimal working dilution should be determined by the investigator.
Restrictions:	For Research Use only

Handling

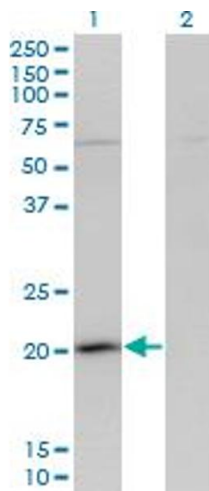
Buffer:	In 1x PBS, pH 7.4
Handling Advice:	Aliquot to avoid repeated freezing and thawing.
Storage:	-20 °C
Storage Comment:	Store at -20°C or lower. Aliquot to avoid repeated freezing and thawing.

Images



ELISA

Image 1. Detection limit for recombinant GST tagged GPSM3 is 0.3 ng/ml as a capture antibody.

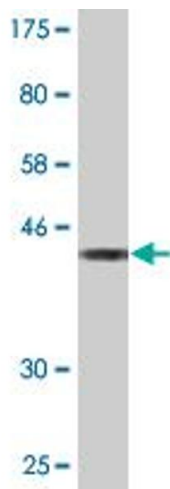


Western Blotting

Image 2. Western Blot analysis of GPSM3 expression in transfected 293T cell line by GPSM3 monoclonal antibody (M01), clone 1F11.

Lane 1: GPSM3 transfected lysate (Predicted MW: 17.9 KDa).

Lane 2: Non-transfected lysate.



Western Blotting

Image 3. Western Blot detection against Immunogen (43.34 KDa).